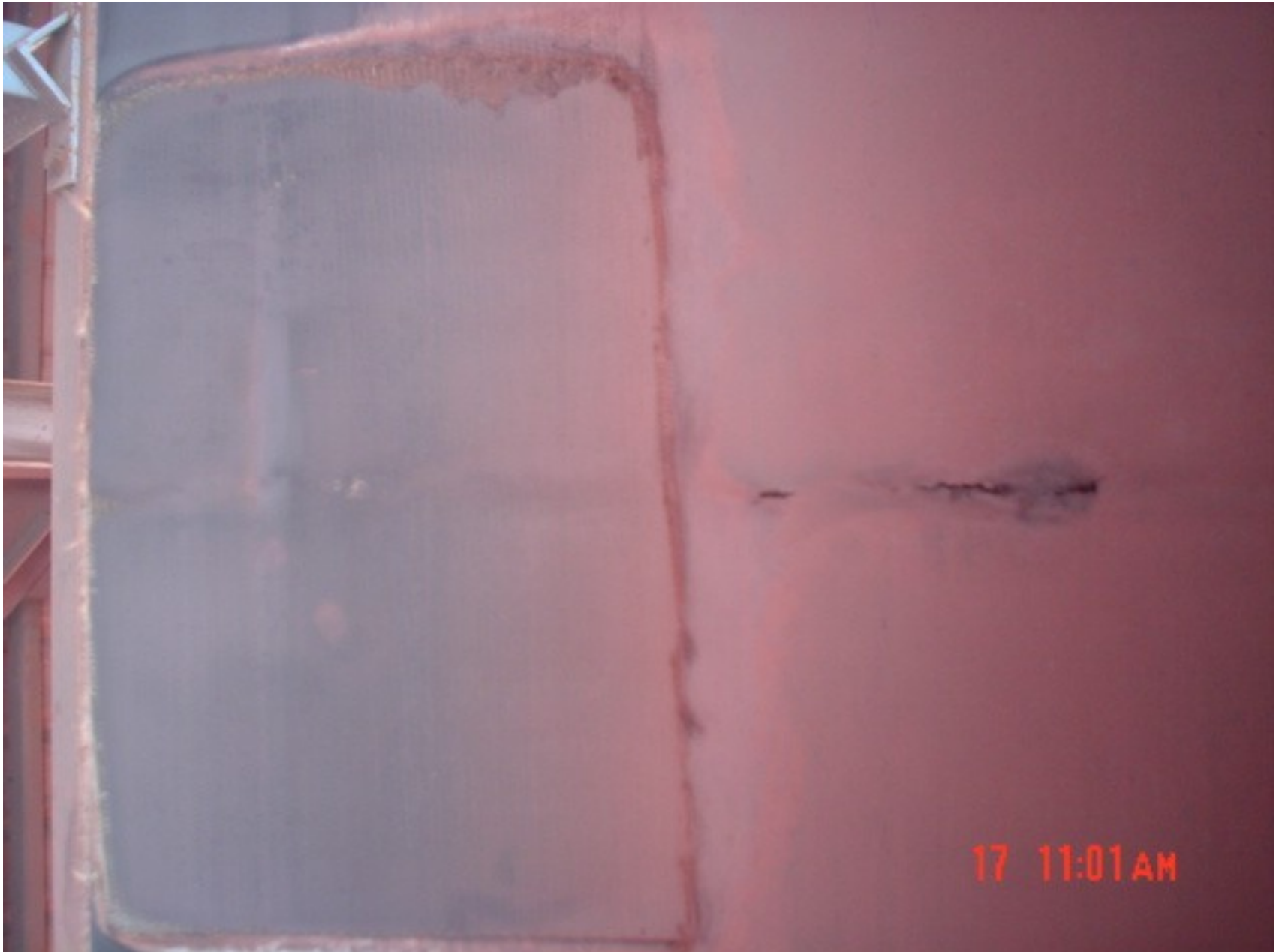


5F 1.55 conv. Top rubber & ply cut across the width



5F 1.55 conv. Top rubber & ply cut across the width



5F 1.55 conv. Top rubber & ply cut across the width



5F 1.55 conv. Top rubber & ply cut across the width, thickness reduced at that area



5F 1.55 conv. Top rubber & ply cut across the width



5F 1.55 conv. Top rubber & ply cut across the width





5F 1.55 conv. Belt thickness reduced across the width at many location



5F 1.55 conv. Belt thickness reduced across the width at many location





5F 1.55 conv. Belt thickness reduced across the width at many location



TF 1.31 conv. Same problem, ply is not in continuation cause the cut in top rubber



TF 1.31 conv. Same problem, ply is not in continuation cause the cut in top rubber



TF 1.31 conv. ply is not in continuation cause the cut across the width in top rubber