

# Hardclad Plate

Hardclad Plate is a special clad steel plate manufactured by depositing, by means of overlay welding, ultra abrasion resisting alloy on the base metal usually made of mild steel plate. Our special automatic welding method has made it possible to manufacture very hard and high-quality plates which are practically free from cracks and strains.

## Features

The chief advantage of Hardclad Plate is its excellent abrasion resistance. Especially, precipitation of various kinds of carbide has made it possible to be used for the parts which require strong abrasion wear and erosion wear.

Furthermore, the standard thickness of base material is 9mm (or 6mm), making the plate light enough for one person to carry easily. The surface of Hardclad Plate is smooth without any practical irregularity.

Cracks and strains are eliminated to the inconceivable degree the conventional materials could not attain.

## Chemical Composition

Four types of Hardclad Plate are currently available. All of them mainly consists of high Cr cast iron. This makes it possible for plate to precipitate a large amount of Cr carbide with high hardness (HV>1300), showing a good abrasion resistance. The higher grade plates which are made to precipitate composite carbide in addition to Cr carbide have made it possible to realize more hardness and stronger abrasion resistance.

## Types of Plates

Hardclad Plates with the following kinds of standard sizes are available. Plates with a larger size than the ones as shown below can also be produced. Various shapes of plates and fabricated vessels can also be produced. The follow four types of Hardclad Plates are currently available.

Name	Type (Base metal+Deposited metal)	Size(mm)	Composition	Hardness (HV)	Hardness (HRC)
A-Plate	6+4, 6+6, 8+4, 8+6, 8+8,	1500*1000	High Cr cast iron+ Composite carbide	≥750	≥60
B-Plate	10+4, 10+6, 10+8, 10+10,			≥800	≥64
C-Plate	12+6, 12+8, 15+4, 15+6, 15+8, 15+10			≥800	≥64

## Application

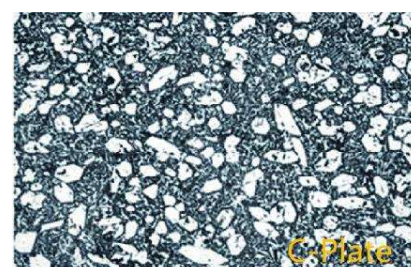
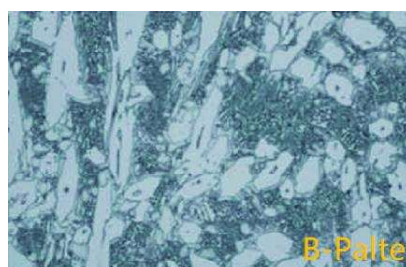
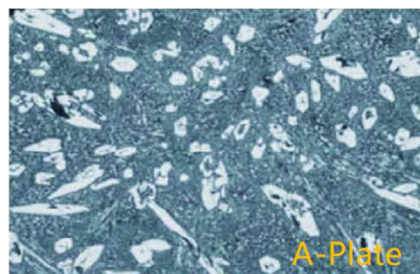
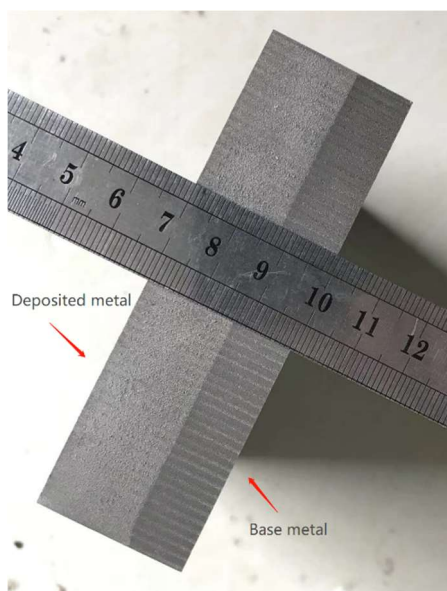
Our Hardclad Paltes can be applied to various industrial fields such as cement, iron manufacturing , coke, coal, mining, ceramics, civil engineering and quarrying , casting, etc.

Equipment to which Hardclad Plate is applied: various kinds of chutes, hoppers , fans, various kinds of liners , screens, crushers, various kinds of guides, grizzly bars, dampers , mixers, cyclones, etc.

## External View and Microstructures

The following photo shows external views of Hardclad Plates. The surface looks very beautiful without any cracks.

The amount of precipitated chrome carbide and composite carbide increases as the grade of Hardclad Plate goes up.





**Contact Information**

Yangzhou FusionBMH Engineering Co.,Ltd

Xian Jiaotong University Industrial Zone A3-211,Hanjiang District, Yangzhou City.

225000 China

Mobile:+86-15105252769

E-mail: [fusionbmh@gmail.com](mailto:fusionbmh@gmail.com) [HardClad\\_Plate@hotmail.com](mailto:HardClad_Plate@hotmail.com)

Website: [www.fusionbmh.com](http://www.fusionbmh.com)



**Contact Information**

Yangzhou FusionBMH Engineering Co.,Ltd

Xian Jiaotong University Industrial Zone A3-211,Hanjiang District, Yangzhou City.

225000 China

Mobile:+86-15105252769

E-mail: [fusionbmh@gmail.com](mailto:fusionbmh@gmail.com) [HardClad\\_Plate@hotmail.com](mailto:HardClad_Plate@hotmail.com)

Website: [www.fusionbmh.com](http://www.fusionbmh.com)