

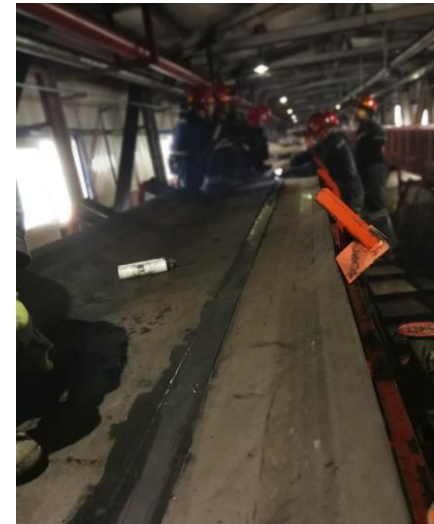
## Example of applications with Multiface®



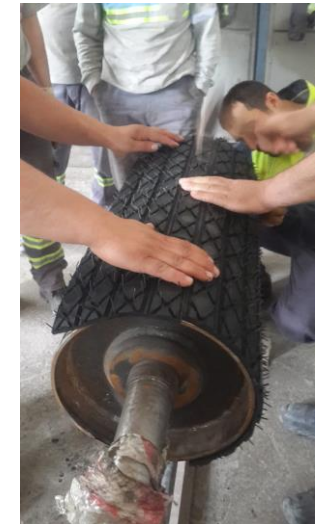
Finger splicing of monopley belts



Step splicing of multiply belts



Long rip repair with cover strip



Pulley lagging

	Multiface 1.5	Multiface 5	Multiface 20
Pot time at 23°C (= max. interruption time of mixing)	1.5 min.	5 min.	20 min.
Max. time available to spread out the glue by doing it in several steps	15 min.	45 min.	90 min.
Open time at 23°C/73°F (for a light or a higher tacky)	0-30 min. (≈ 10-30 min.)	0-60 min. (≈ 15-60 min.)	0-120 min. (≈ 60-120 min.)
Hand strength at 23°C/73°F	1 h	2 h	4 h
Curing time for full functional strength at 23°C/73°F, depending of the material	1 ½ - 2 h	3-4 h	6-8 h
Curing time for full functional strength at 75°C/163°F, depending of the material	< 1 h	< 1 h	< 1-1½ h



Step splice on baler belt (90 mm pulley)



Hole & surface repair



Seal belt fasteners



Food contact approval according to EG 1935/2004  
and EU 10/2011 or self-extinguishing and antistatic