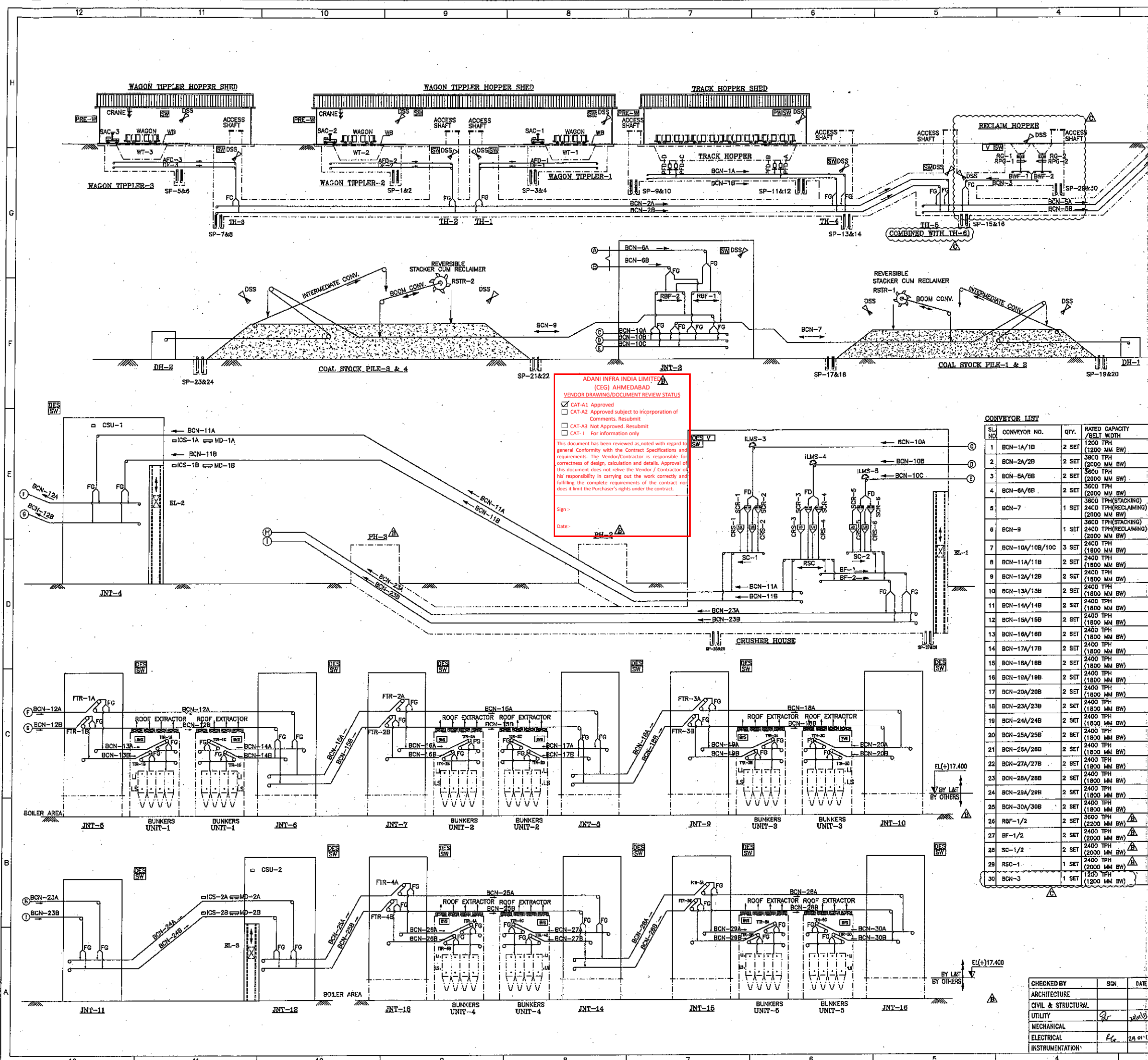


This drawing is the property of Larsen & Toubro Limited, ECC Division and must not be passed on to any person or body not authorised by us to receive it nor be copied or otherwise made use either in full or in part by such person or body without our prior permission in writing



LEGEND

AFD	APRON FEEDER	RSTR	REVERSIBLE STACKER CUM RECLAIMER
BCN	BELT CONVEYOR	SCR	SCREEN
CSU	COAL SAMPLING UNIT	SP	SUMP PUMP
DES	DUST EXTRACTION SYSTEM	TH	TRANSFER HOUSE
DF	DRIBBLE FEEDER	TR	TRAVELLING TRIPPER
DSS	DUST SUPPRESSION SYSTEM	WT	WAGON TIPPLER
DH	DRIVE HOUSE	PFD	PADDLE FEEDER
FG	FLAP GATE	CRS	CRUSHER
ICS	INLINE CONVEYOR SCALE	FTR	FIXED TRIPPER
ILMS	INLINE MAGNETIC SEPARATOR	BVS	BUNKER VENTILATION SYSTEM
JNT	JUNCTION TOWER	FD	FLOW DIVIDER
LI	BUNKER LEVEL INDICATOR	SC	SHUTTLE CONVEYOR
LS	LOW LEVEL SWITCH	RSC	REVERSIBLE SHUTTLE CONVEYOR
MD	METAL DETECTOR	EL	ELEVATOR
PH	PENT HOUSE	SAC	SIDE ARM CHARGER
RBF	REVERSIBLE BELT FEEDER	WB	WEIGH BRIDGE
V	VENTILATION SYSTEM	PW	POTABLE WATER
SW	SERVICE WATER	PRES-W	PRES-WATERING
RG	RACK & PINION GATE	BWF	BELT WEIGH FEEDER

EQUIPMENT LIST

SL NO.	EQUIPMENT	QTY.	RATED CAPACITY
1	WAGON TIPPLER WITH SIDE ARM CHARGER	3 Nos.	20 TIPS/Hr.
2	APRON FEEDER	3 Nos.	1200 TPH EACH
3	DRIBBLE FEEDER	3 Nos.	200 TPH EACH
4	PADDLE FEEDER	4 Nos.	800 TPH EACH
5	STACKER CUM RECLAIMER- 1 & 2	2 Nos.	3800 TPH (STACKING) 2400 TPH (RECLAIMING)
6	SCREENS-VIBRATING GRIZZLY TYPE 1/2/3/4/5/6	6 Nos.	1250 TPH EACH 1/2"-100 MM, SEPARATION 25 MM
7	CRUSHER-GRANULATOR TYPE 1/2/3/4/5/6	6 Nos.	1200 TPH EACH, 1/2"-100 MM O/P < 25 MM
8	INLINE MAGNETIC SEPARATOR	5 Nos.	-
9	METAL DETECTORS	4 Nos.	-
10	INLINE CONVEYOR SCALE	4 Nos.	-
11	TRAVELLING TRIPPER	20 Nos.	2400 TPH
12	BELT VULCANISER	2 Nos.	-
13	COAL SAMPLING UNIT	2 Nos.	-
14	ELEVATOR (R&P TYPE)	3 Nos.	-
15	FLOW DIVIDER	3 Nos.	-
16	EOT CRANE	2 Nos.	-
17	FLAP GATE	80 Nos.	-
18	MANUAL & ELECTRIC HOIST	LOT	-
19	SUMP PUMP	30 Nos.	-
20	BELT WEIGH FEEDER	2 Nos.	-
21	ROD GATE	2 Nos.	-
22	RACK & PINION GATE	2 Nos.	-

ADANI INFRA INDIA LIMITED (CEG) AHMEDABAD
VENDOR DRAWING/DOCUMENT REVIEW STATUS
 CAT-A1 Approved
 CAT-A2 Approved subject to incorporation of Comments/Resubmit
 CAT-A3 Not Approved. Resubmit
 CAT-1 For information only
 This document has been reviewed as noted with regard to general conformity with the Contract Specifications and requirements. The Vendor/Contractor is responsible for correctness of design, calculation and details. Approval of this document does not relieve the Vendor/Contractor of his responsibility in carrying out the work correctly and fulfilling the complete requirements of the contract nor does it limit the Purchaser's rights under the contract.
 Sign: _____
 Date: _____

CONVEYOR LIST

SL NO.	CONVEYOR NO.	QTY.	RATED CAPACITY / BELT WIDTH
1	BCN-1A/1B	2 SET	1200 TPH (1200 MM BW)
2	BCN-2A/2B	2 SET	3800 TPH (2000 MM BW)
3	BCN-5A/5B	2 SET	3500 TPH (2000 MM BW)
4	BCN-6A/6B	2 SET	3500 TPH (2000 MM BW)
5	BCN-7	1 SET	3800 TPH (STACKING) 2400 TPH (RECLAIMING) (2000 MM BW)
6	BCN-9	1 SET	3800 TPH (STACKING) 2400 TPH (RECLAIMING) (2000 MM BW)
7	BCN-10A/10B/10C	3 SET	2400 TPH (1800 MM BW)
8	BCN-11A/11B	2 SET	2400 TPH (1800 MM BW)
9	BCN-12A/12B	2 SET	2400 TPH (1800 MM BW)
10	BCN-13A/13B	2 SET	2400 TPH (1800 MM BW)
11	BCN-14A/14B	2 SET	2400 TPH (1800 MM BW)
12	BCN-15A/15B	2 SET	2400 TPH (1800 MM BW)
13	BCN-16A/16B	2 SET	2400 TPH (1800 MM BW)
14	BCN-17A/17B	2 SET	2400 TPH (1800 MM BW)
15	BCN-18A/18B	2 SET	2400 TPH (1800 MM BW)
16	BCN-19A/19B	2 SET	2400 TPH (1800 MM BW)
17	BCN-20A/20B	2 SET	2400 TPH (1800 MM BW)
18	BCN-23A/23B	2 SET	2400 TPH (1800 MM BW)
19	BCN-24A/24B	2 SET	2400 TPH (1800 MM BW)
20	BCN-25A/25B	2 SET	2400 TPH (1800 MM BW)
21	BCN-25A/25B	2 SET	2400 TPH (1800 MM BW)
22	BCN-27A/27B	2 SET	2400 TPH (1800 MM BW)
23	BCN-28A/28B	2 SET	2400 TPH (1800 MM BW)
24	BCN-29A/29B	2 SET	2400 TPH (1800 MM BW)
25	BCN-30A/30B	2 SET	2400 TPH (1800 MM BW)
26	RBF-1/2	2 SET	3600 TPH (2200 MM BW)
27	RBF-1/2	2 SET	2400 TPH (2000 MM BW)
28	SC-1/2	2 SET	2400 TPH (2000 MM BW)
29	RSC-1	1 SET	2400 TPH (2000 MM BW)
30	BCN-3	1 SET	1200 TPH (1200 MM BW)

LEGENDS:
 LAT'S SCOPE OF SUPPLY
 NOT IN LAT'S SCOPE OF SUPPLY

C	NO.	DATE	BY	FOR	DESCRIPTION
C	20.01.13				BLENDING SCHEME INCLUDED
B	08.03.10	SNPK	THL	TYS	MS
A	11.11.09	SNPK	THL	TYS	MS

ADANI POWER MAHARASTRA LIMITED
 OWNER
POWERGEN INFRASTRUCTURE (L.L.C)
 EMPLOYER
FICHTNER CONSULTING ENGINEERS (P) LTD
 CONSULTANT
LARSEN & TOUBRO LIMITED
 CONTRACTOR
 ECC Division - EDRC

APML DWG.NO. TIR1-EPC-CHP-DM-F-0001
TITLE: FLOW DIAGRAM FOR COAL HANDLING SYSTEM
 JOB NO.: 09168
 SCALE: N.T.S.
 SHEET: AI
 DWG. NO.: 09153-M-BM-CS-FD-0001
 REV. SHEET: 1 OF 1

CHECKED BY

DISCIPLINE	NAME	DATE
ARCHITECTURE		
CIVIL & STRUCTURAL		
UTILITY		
MECHANICAL		
ELECTRICAL		
INSTRUMENTATION		