



OVERVIEW ABOUT THE CAPABILITIES OF PT.AE MATERIAL HANDLING SYSTEM



ONE STOP FOR
BULK MATERIAL HANDLING SOLUTIONS



MALAYSIAN AE MODELS HOLDINGS BERHAD.

AUTHORISED CAPITAL	:	RM 200,000,000
PAID UP CAPITAL	:	RM 107,006,868
BUSINESS TURNOVER 2010/2011	:	RM 446,289,125

AE AUTOMOTION (M) SDN BHD.

AUTHORISED CAPITAL	:	RM 50,000,000
PAID UP CAPITAL	:	RM 40,000,000
BUSINESS TURNOVER 2010/2011	:	RM 326,253,644
BANKERS	:	MAYBANK BHD RHB BANK BHD
BOARD OF DIRECTORS	:	LIM KEE HIN TAN INN HUAT
AUDITORS	:	ERNST & YOUNG
COMPANY SECRETARY	:	SYMPHONY CORPORATE HOUSE SDN BHD
DATE OF EST.	:	26TH NOVEMBER 1991



BRIEF HISTORY AND INTRODUCTION

- PT AE Material Handling Systems, Indonesia is a subsidiary of AE Automotion [M] Sdn Bhd, Malaysia which is 100% owned by MAE Models Group, a Listed company in Malaysian stock exchange (Main Board) .
- AE Bulk Handling Division is the one stop center for Turnkey Solutions for Bulk Handling Systems and Components, where the accountability can be lodged to AE, being a single reputable contractor.
- AE Bulk Handling division can provide substantial range of value added conveyors and related systems to Port handling, Cement Plant, Coal Handling, Fertilizer Plant, Mining, Sugar, Pulp & Paper, Energy, Environment, Wood process industries and all kinds of other Bulk handling systems and its related components.
- The division has expert engineers from various field, with adequate experience to provide the best solution to our client, to enhance the performance of the project and to provide excellent service support.

MAJOR ACTIVITIES AND SERVICES

We Provide :

- Design and Engineering works for Bulk Material Handling System and conveyor equipments.
- Bulk Material Handling System & Components consultancy.
- Selection and Procurement of Material handling and its associated accessories.
- Supply, Fabrication, Installation, Testing and Commissioning of Material handling System.
- Solution to existing plant problem related to Bulk Handling equipment its accessories.
- Upgrading of existing Material Handling System.
- Maintenance, repair and servicing of Material Handling Plant and solution to its trouble shooting problems.

Business Areas :

- Cement Plant
- Fertilizer Plant
- Building Materials
- Energy and Environment
- Pulp & Paper Processing Plant
- Marine
- Mining
- Iron and Steel Plant
- Sugar Plant
- Maintenance & Service of plant
- Other Bulk handling and its related accessories



4500Cu.m Wood Chip handling with 1800BW



1125 TPH Fertilizer Handling Conveyor System



Tripper Car for Fertilizer Plant



900 TPH Raw Meal Handling Conveyor System



CORE PRODUCT RANGE



Bucket Elevators



Slat Chain
Conveyor System



Power Plant Conveyor



Bucket Conveyor



Auto Draw down Hopper



Screw Conveyor



TS loading spout is equipped with rotary spoon to ensure The ship is filled to maximum capability



Pulleys

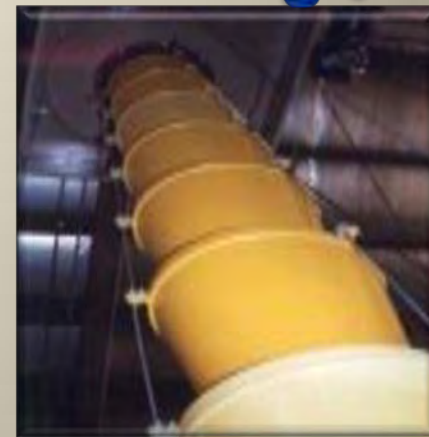


Fully aerated bin bottom supplied

Conveyor System And Its Accessories :

- Apron Feeders
- Belt Conveyors
- Over Land Conveyor
- Pipe Conveyors
- Belt Feeders
- Bucket Elevators (Chain / Belt Type)
- Chain Conveyors
- Conveyor Beltings
- Crushers
- Custom Design Conveyors
- Screens
- Screw Conveyor
- Telescopic Chute
- Auto Draw down Hopper
- Stampler Feeder
- Dust Control System
- Magnetic Separator
- Metal Detector
- Pulleys
- Idlers
- Sampling System
- Safety Switches
- Vibrating Feeder
- Weigh Feeder
- MCC, Control Panels, SCADA System and other associated automation system components.

ae.



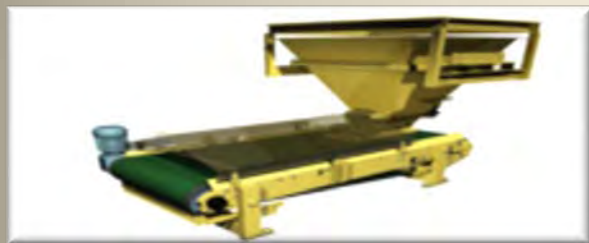
Telescopic Chute



OB & IL Magnetic Separator



Suspension Magnet



Weigh Feeder



Belt Rib Detector



Impact Crusher



Sampling Station



Vibrating Feeder



Vibrating Screen



Belt Scale



Safety Switches



FACTORY INFRASTRUCTURE & MACHINERY



AE FACTORY, BATU PAHAT



AE BATU PAHAT - HQ



AE CHENNAI INDIA- DESIGN OFFICE



AE FACTORY, BATU PAHAT



LASER CUTTING MACHINE



AE ASS UNIT WITH EOT



PLASMA CUTTING MACHINE



COMPANY EQUIPMENTS



LVD ORION 3015 LASER CUT M/C TRUMPF TC5000R-160FMC TURRET PUNCH PLASMA CUTTING M/C-SAF-HP125



AMADA PRESS BRAKE RG100L



PRESS BRAKE M/C - AMADA FBDIII-8025



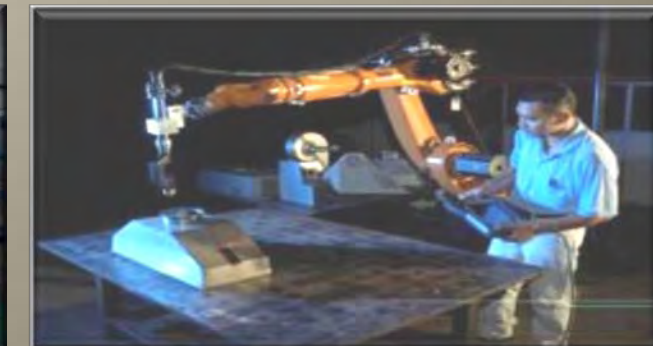
HAAS CNC LATHE SL20



HAAS CNC LATHE SL40L



HAAS CNC MILLING VF3



KUKA ROBOT WELDING - KR-150 / 2

Fabrication Workshop at Loa Kulu, Samarinda,
East Kalimantan, Indonesia

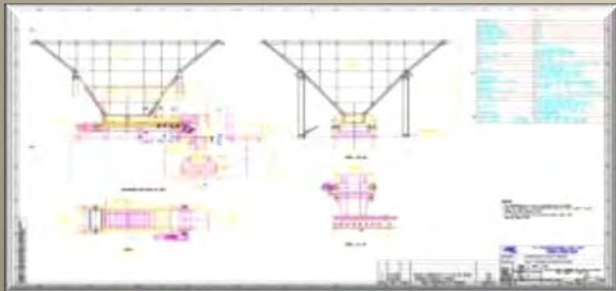
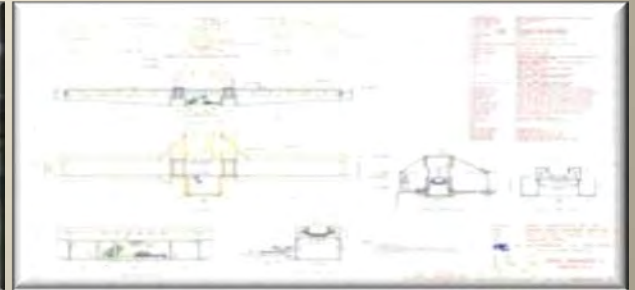


Fabrication Workshop at Loa Kulu, Samarinda,
East Kalimantan, Indonesia



COMPUTER AIDED DESIGN

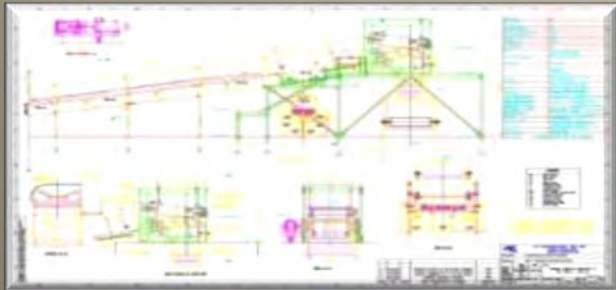
AE Design Department is capable of designing and detailing of complete system or its components, with modern facilities such as CAD and Design software etc., to suit local and imported materials, equipment and component.



1000TPH Coal handling
Belt Feeder with 1600BW



800BW Gypsum Handling
System



4000TPH Coal handling
with 1600BW

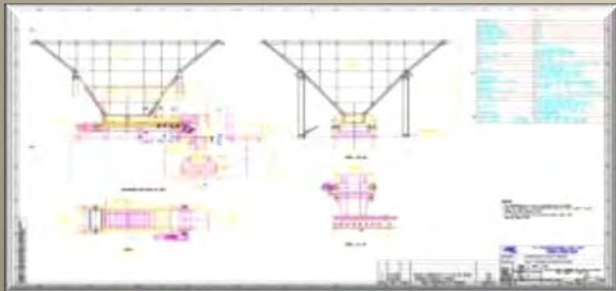
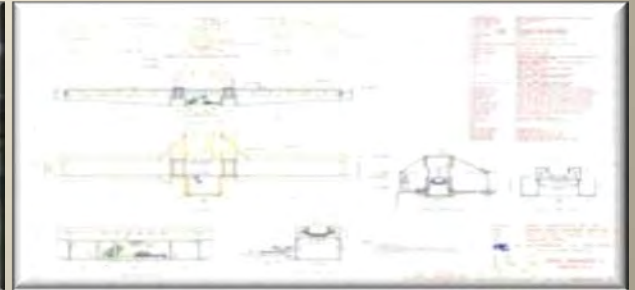


1125TPH Fertilizer Handling
with 1050mm belt width

1125TPH Fertilizer Handling
with 1050mm belt width-1

COMPUTER AIDED DESIGN

AE Design Department is capable of designing and detailing of complete system or its components, with modern facilities such as CAD and Design software etc., to suit local and imported materials, equipment and component.



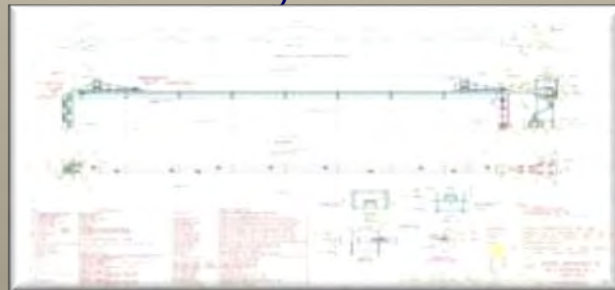
1000TPH Coal handling
Belt Feeder with 1600BW



800BW Gypsum Handling
System



4000TPH Coal handling
with 1600BW

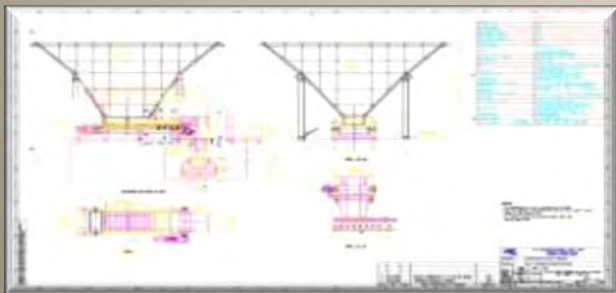
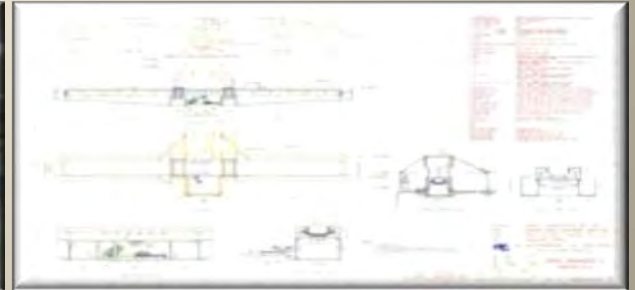


1125TPH Fertilizer Handling
with 1050mm belt width

1125TPH Fertilizer Handling
with 1050mm belt width-1

COMPUTER AIDED DESIGN

AE Design Department is capable of designing and detailing of complete system or its components, with modern facilities such as CAD and Design software etc., to suit local and imported materials, equipment and component.



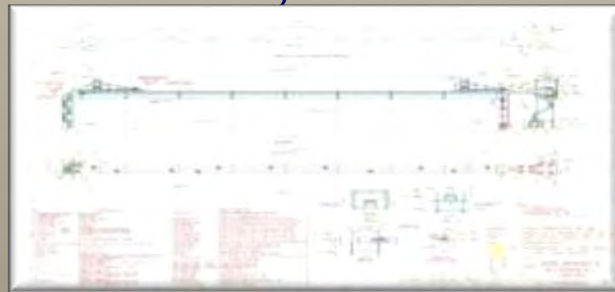
1000TPH Coal handling
Belt Feeder with 1600BW



800BW Gypsum Handling
System



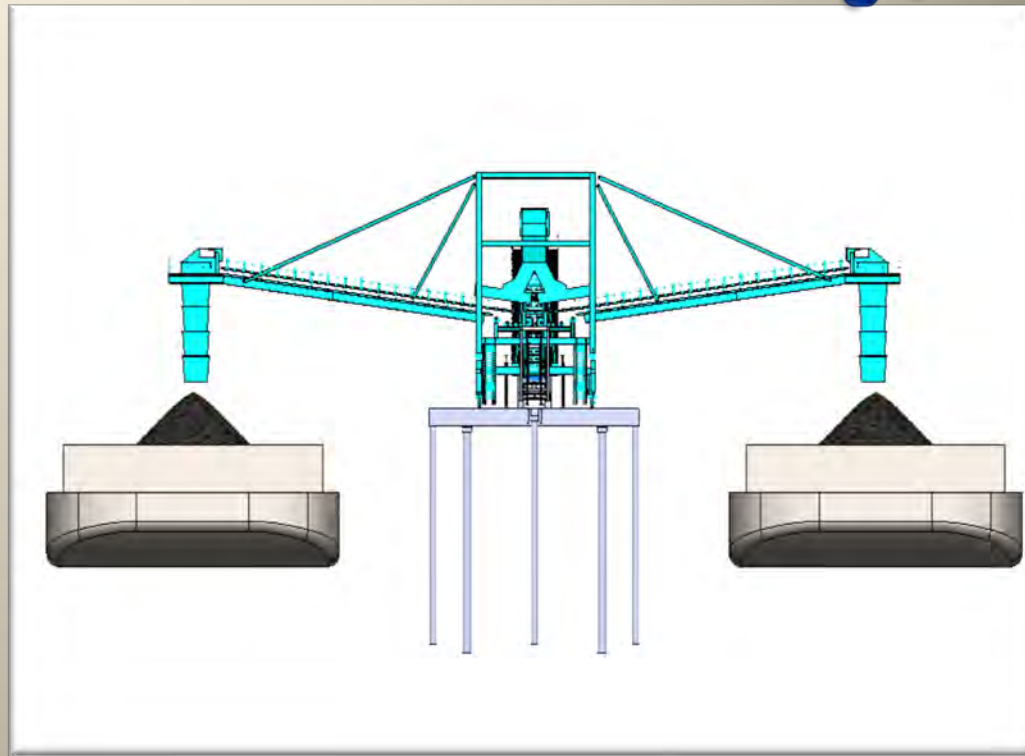
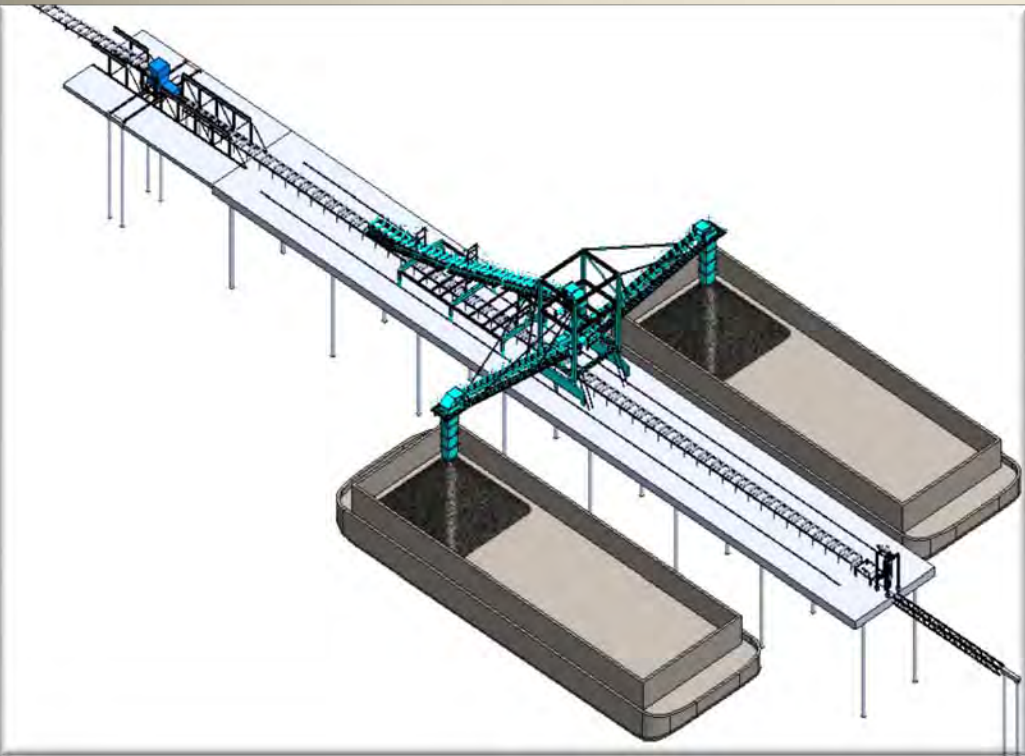
4000TPH Coal handling
with 1600BW



1125TPH Fertilizer Handling
with 1050mm belt width

1125TPH Fertilizer Handling
with 1050mm belt width-1

COMPUTER AIDED 3D DESIGN



QUALITY ASSURANCE (TQM AND ISO 9001 & ISO 9002)

Customers' satisfaction is a priority in our business philosophy. To this end, we emphasize quality service in our human resources development programs. Staffs are continuously put through training and re-training courses as well as on-the-job training program to ensure that they are well-versed with the latest technology advancement. Our offices in Malaysia and Singapore have already made Total Quality Management as an integral part of our day-to-day operations. Steps are well underway to ensure that quality control systems in the company conform to the internationally recognized ISO 9000 standard. With the commitment and dedication from our staff to strive for excellence, we have been awarded with the Quality Systems Awards ISO 9002 and ISO 9001 in the end of 1997.

AE constantly looking at ways to improve and to achieve success always. The quality of work is achieved professionally with engineering expertise, dynamic approach and the spirit of dedicated service. With the aid of CAD and other software design solutions, we possess the technology, know how, capacity to design, manufacture, install, test and commission the system to the satisfaction of our client.



QUALITY AND SAFETY CERTIFICATIONS WITH AE



Registration Certificate

BM TRADA certify that the Quality Management System of

Matromatic Handling Systems (M) Sdn Bhd
 (Company No.363504-K)
 No. 9, Jalan Wawasan 12
 Kawasan Perindustrian Sri Gading
 83300 Batu Pahat
 Johor, Malaysia

meets the requirements of ISO 9001:2008
 and is registered within the BM TRADA certification scheme

The client agrees to maintain their management system to continually meet the requirements of ISO 9001:2008
 and use the logo and certification mark in accordance with BM TRADA regulations

Scope of Certification

Design, Manufacture and Installation of Automated Material Handling and Factory
 Automation Systems, Contract Manufacturing of Parts and Assemblies

Darius E. Othman

Signed on behalf of BM TRADA Certification Ltd
 Shoring Lane, Highgrove Valley, High Wycombe,
 Buckinghamshire HP12 4ND

*Further verification regarding this scope of certification and the
 applicability of ISO 9001:2008 requirements and conditions of this
 certificate is available from BM TRADA at the address above or by
 electronic through www.bmtrada.com

This certificate remains the property of BM TRADA. Conditions apply in
 relation to possible re-issues of this certificate.

Certificate of Achievement
Enterprise 50

This is to certify that

Malaysian AE Models Holdings Berhad

is a winner in the 1998 run of the
 Enterprise 50 Award Programme

Kalsim Abdul Rahman
Chief Executive Officer
 Small and Medium Enterprises Development Corporation

Larry Gan
Managing Partner
 Andersen Consulting

Celebrating Malaysia's
 Enterprising Spirit

SPECIAL MEMBER CERTIFICATE
GAPENSI
(NATIONAL CONTRACTORS ASSOCIATION OF INDONESIA)

Nomor : 09.71.10.1296.11.14227

NAMA PERUSAHAAN	: PT. AE MATERIAL HANDLING SYSTEMS
NAMA PIMPINAN	: Lim Kee Hin
ALAMAT PERUSAHAAN	: Rantau Office Park Unit 10-08 J. 10, Rantau Sebeli Gunung, Merimbun, Kedah 06000 Telip - 021-82780311, Fax 021-82780322
KUALIFIKASI	: Gred 7 (Gred Tujuh)
Adalah Anggota Luar Biasa GAPENSI Provinsi	: DKI Jakarta

Nomor Registrasi 02.2012.09.3171.004030

Jakarta, 29 Februari 2012
 Ketua Pimpinan Pusat GAPENSI

M. N. SOEHARSO
Ketua Umum

Relian Pimpinan Daerah GAPENSI
 Provinsi DKI Jakarta

LEONARD SILALAH, JR.
Ketua Daerah

Ketua Pimpinan Cabang GAPENSI
 Kota Jakarta Selatan

E. KRISHAN N. HINTASALIAN, HML
Ketua

Berlaku dari 1 Januari 2012 sampai dengan 31 Desember 2012

NO : 00027 - XXVI

QUALITY & SAFETY CERTIFICATIONS WITH AE



Certificate OHS-IND/3302

The management system of

PT. AE Material Handling Systems

Rasuna Office Park Unit 10-08
Jl. HR Rasuna Said Kav 1
Jakarta Selatan 12960
Indonesia

has been assessed and certified as meeting the requirements of

OHSAS 18001

For the following activities:

-Provision of General Construction and Maintenance Services For Civil Engineering and Other Construction Works.

Further clarifications regarding the scope of this certificate and the applicability of OHSAS 18001 requirements may be obtained by consulting the organization.

This certificate is valid from 15 November 2011 until 15 November 2014
Issue 01 Certified since November 2011

Authorized by



Signed on behalf of ICSM Indonesia

Registered by ICSM Indonesia	15 September	2011
1st Surveillance	15 May	2012
2nd Surveillance	15 November	2012
3th Surveillance	15 May	2013
4th Surveillance	15 November	2013
5th Surveillance	15 May	2014
6th Renewal Certificate	15 November	2014

ICSM Systems & Services Certification
MUC Building, 5th Floor, Jl. TB Simatupang No 13, Jakarta Selatan 12530, Indonesia

+62 (0)21 788-40797 | +62 (0)21 788-40779 | www.icsm-indonesia.com

Registration Certificate




ISO 9001:2000 012

Certificate Number 2274

03 September 2003	03 September 2003	02 September 2012
Date of Initial Registration	Date of Last Issue	Date of Expiry

This is to certify that the Quality System of

Matromatic Handling Systems (M) Sdn Bhd
(Company No. 363504-K)
No 9, Jalan Wawasan 12,
Kawasan Perindustrian Sri Gading,
83300 Batu Pahat,
Johor,
Malaysia

*meets the requirements of ISO 9001: 2000
and is registered within the
BM TRADA Certification scheme for approved Quality Systems*

The scope of the approval is as shown in the Schedule

*The Company agrees to maintain its Quality System to ISO 9001: 2000
and use the Approved Quality System Mark in accordance with the Regulations*

*Further clarifications regarding the scope of this certificate and the applicability
of ISO 9001: 2000 requirements may be obtained by consulting the organization*


 Signed on behalf of BM TRADA Certification Ltd



PORT PROJECTS



WEST PORT MALAYSIA



WEST PORT MALAYSIA



WEST PORT MALAYSIA



BALIKPAPAN COAL TERMINAL, INDONESIA



ASAM-ASAM PORT, INDONESIA



ASAM-ASAM PORT, INDONESIA



ASAM-ASAM PORT, INDONESIA



ASAM-ASAM PORT, INDONESIA



ASAM-ASAM PORT, INDONESIA

BARGE LOADING, UNLOADING PROJECTS



BCT, INDONESIA



WAHANA, INDONESIA



WAHANA, INDONESIA



PIK, INDONESIA



PT TEGUH, INDONESIA



PIK, INDONESIA



SINO LING, SINGAPORE



SINO LING, SINGAPORE



TRANSHIPMENT BARGE, INDONESIA

OLC, CEMENT PLANT PROJECTS, OTHERS MISCELLANEOUS JOBS



ADM COCOA, SINGAPORE



LAFARGE CEMENT, MALAYSIA



MALAYAN CEMENT, BLUE CIRCLE GROUP



KEL, OLC



KEL, OLC



SIS '88, SINGAPORE



OCL JORDAN PROJECT



OCL JORDAN PROJECT



NPK FERTILIZER, MALAYSIA

SPECIALIZED JOBS & SITE WORKS



BCT, INDONESIA



ASIAN BINTULU FERTILIZERS, MALAYSIA



ASIAN BINTULU FERTILIZERS, MALAYSIA



KET, INDONESIA



KET, INDONESIA



KFT, INDONESIA



PIK, INDONESIA



WEST PORT, MALAYSIA



ASAM-ASAM PORT, INDONESIA

SHIPLOADING, UPGRADE JOBS



BALIK PAPAN COAL TERMINAL, (BCT) INDONESIA



BALIK PAPAN COAL TERMINAL(BCT), INDONESIA



KPC, INDONESIA



KPC (KALTIM PRIMA COAL), INDONESIA



KPC, INDONESIA



KPC, INDONESIA



KPC, INDONESIA



KPC, INDONESIA



KFT, INDONESIA

STOCKPILE, BLENDING, CPP PROJECTS



WAHANA, INDONESIA



PERKASAINAKA KERTA (PIK,) INDONESIA



BCT, STOCKPILE



BCT_EXPANSION



BCT, INDONESIA



WAHANA, INDONESIA



TEPIAN ULAK (STACK PILE)



TEPIAN ULAK / PIK BARGE LOADING SYSTEM



TEPIAN ULAK (STACK PILE)

FERTILIZER PLANT, POWER PLANT, SUGAR PLANT PROJECTS



ABE_BINTULU



FAM_GERMANY



KAPAR POWER PLANT UPGRADE WORKS



MUKAH POWER PLANT, SARAWAK



MUKAH POWER PLANT, SARAWAK



SIS '88 JURONG PORT, SINGAPORE



SIS '88_SINGAPORE_MOBILE_CONVEYOR



WEST_FERTILIZER_WING_TRAVELLING_MACHINE



WEST_FERTILIZER_TRIPPER_CAR_CONVEYOR

WOOD CHIPS, FIBRE, PAPERMILL PROJECTS



KUTALCHIP MILLS, INDONESIA



KUTALCHIP MILLS



KUTALCHIP MILLS



KUTAI CHIP MILLS



RIAU ANDALAN PAPER MILLS



DUMAI FIBRE, SHIP LOADING SYSTEM



ALBANY, AUSTRALIA



ALBANY, AUSTRALIA



DUMAI FIBRE, SHIP LOADING SYSTEM

KPC PROJECT – CIVIL & STRUCTURE WORKS



CIVIL WORK FOR SAMPLING PLANT



NORTH SHIPLoader BOOM & TIEROD REPLACEMENT



DISMANTLING OF EXISTING CHUTE OF SHIPLoader



DISMANTLED EXISTING CHUTE OF SHIPLoader



DISMANTLING OF EXISTING HOIST IN TRANSFER TOWER



REPLACEMENT OF TRIPPER PULLEYS OF RECLAIMER



ERECTION OF NEW TAIL PULLEY FOR RECLAIMER CONVEYOR



NEW HOIST ERECTION IN TRANSFER TOWER

2 X 15 MW KARIANGAU POWER PLANT EPC PROJECT – CIVIL & STRUCTURE WORKS



FOUNDATION FOR CRUSHER HOUSE



CLOSED COAL STOCK YARD CONSTRUCTION



RCC CHIMNEY



TEMPORARY MESS



WATER PUMP HOUSE PEDESTALS

OTHER MANUFACTURING AND SERVICE INDUSTRIES



Internal transport and handling system for tobacco, panel board, packaging, garment and textile industries.



PROJECT COMPLETION CERTIFICATES



PT. AE AUTOMOTION INDONESIA.



Pada 100-Clara Blok AB-176/31
J.M.T Harsono
Bekijayap Baru
Bekijayap
Kebomas, JONGKORING
Tel. +62 342 728 4132
Fax. +62 342 728 4127

To: **PT. Dermaga Perikanan Pratama**
Bekijayap Coal Terminal
Teluk Trabing, Kabupaten Karangasem,
Bekijayap,
Indonesia.

Date : 20.05.2009

Kind Attn: **Mr. Luk Han Joo**

Title of Work : Design, supply, installation, testing and Commissioning of Drawdown hopper for RC1,2,3,4,5,6,7 & RC(BCT Phase 1&2) s/w accessories components as specified in the schedule of Prices attached herewith including testing & commissioning.

Final Acceptance Certificate for RC1 Drawdown Hopper

Dear Sir,

In accordance with the contract terms and conditions, under article clause Completion and Acceptance of the work, Kindly certify the work as follows:

Workorder No : 022/SPP-DLTK/11/08

Work Description : Design, supply, installation, testing and Commissioning of Drawdown hopper for RC1 s/w accessories components as specified in the schedule of Prices.

Date of Acceptance : 20th May 2009

PT Dermaga Perikanan Pratama accepts that the work carried out is complete and to your satisfaction.

Thank you,

Best regards,

PT. AE AUTOMOTION INDONESIA

PT. DERAGA PERIKANAN PRATAMA

[Signature]
Dedy W. Murtadisastra
Site Engineer

[Signature]
Luh Han Joo
v/17
v/10

**FINAL ACCEPTANCE CERTIFICATE
FOR
DELIVERY OF BELT CONVEYOR SYSTEM
CONTRACT 1354 SIA /ID 1**

This is to state that Final inspection and Performance Test of Belt Conveyor System supplied by AE Automotion (M) SDN.BHD have been carried out successfully and accepted by PT. Sontosa Utama Indah Abadi on 11 January 2009.

AE Automotion (M) SDN.BHD obligation and responsibility for mechanical integrity in accordance with Clause M2.1 of General Contract Conditions and other contractual Obligations remain in effect and force.

The Vendor is entitled to release of payment as per the contractual payment terms.

PT. PEC-Tech Indonesia

[Signature]
S.S. Yong
Project Manager

PT. Sontosa Utama Indah Abadi

[Signature]
Hendy Andriat
Operator Mgr

Engineering Resources Limited

[Signature]



PT. PEC-Tech Indonesia
P.O. Boxed No. 101, Medan
40134 Medan, Riau 20011
Indonesia
Tel. +62 311 88611 88228
Fax. +62 311 82381 82338

**FINAL ACCEPTANCE CERTIFICATE
BELT CONVEYORS FOR WOOD HANDLING
CONTRACT 1382-RAPP/DB**

This is to certify that the Belt Conveyors supplied by AE Automotion have been tested for 24 hours and conveyors perform successfully at design capacity. Title and responsibility of the system is transferred to PT. Intipura Perastama on 22th March, 2009 in accordance with the contract.

Any of contractual obligations including Purch List items (if any) remaining in the Capacity list date shall be completed by PEC-Tech / AE Automotion at a time mutually agreed by the parties.

PEC-Tech

RAPP

[Signature]
Luk Mubandira
Project Coordinate

[Signature]
G. H. Sifora
Process Coordinator

[Signature]
J.P. Yusley
Project Management Services
Manager

[Signature]
David Kerr
Operations Manager

PROJECT COMPLETION CERTIFICATES



CERTIFICATE FOR ENGINEERING PACKAGE COMPLETION FOR DELIVERY OF CONVEYOR COMPONENTS FOR FUTONG (KERINCI) CONTRACT 1647 RAPP/PL2E

Project : CRIP UNLOADING AT FUTONG PORT
Vendor : AE AUTOMATION

This is to state that all certified documents in Package 1 & 2 for the above contract as per stipulated under Appendix 5 has been received in full on September 12 2008 and the payment associated with that can be released to the vendor.

	Signature	Date
Mechanical		12-12-08
Electrical		12-12-08
Process		12-12-08
Instrumentation		12-12-08
Trial		12-12-08
Project Manager		12-12-08

CERTIFICATE FOR ENGINEERING PACKAGE COMPLETION FOR DELIVERY OF BELT CONVEYOR MWH-7 CONTRACT 1647-RAPP/PL2E

Project : RB05
Vendor : AE AUTOMATION

This is to state that all certified documents in Package 1, 2, 3 and 4 for the above contract as per stipulated under Appendix 5 has been received in full on 19 January 2007 and the payment associated with that can be released to the vendor.

	Signature	Date
Civil		01-11-08
Mechanical		21/01/08
Electrical		21/01/08
Instrument		21/01/08
Automation		20/01/08
Dy. Engineering Manager		01-11-08
Project Manager		



SIS '88 PTE LTD

11 Selegie Road, Level 11, Singapore 347877
Tel: 65 6337 2888 Fax: 65 6337 1822

Date : 15th November 2008

TWO WHOM IT MAY CONCERN

This is to certify that AE AUTOMATION (M) SDN. BHD. which has successfully completed the Sugar Unloading Conveyor System of our Turkey Project for Site Loading System at Jurong Port, Singapore.

Project Title : Design, Engineering, Supply, Fabrication, Installation and Commissioning of a Sugar Unloading Conveyor System at Jurong Port and SIS'88 Pte Ltd Plant at Jurong Port Road, Singapore.

The responsibilities of the company included design, supply, erection and commissioning of the conveyor system.

This letter is issued upon completion of one (1) years defect liability / warranty period in appreciation to the level of competence & professionalism they possess in ensuring the project was completed with satisfactory.

Thank you

Regards,
SIS'88 PTE. LTD.





PT. MITRATAMA PERKASA

CERTIFICATE OF PRACTICAL COMPLETION
SERTIFIKAT PERSILAHAN PRAKTIS

ACREMENT NO. ASAM-ASAM PORT

This is to certify that the Agreement between the Parties to assist each other in completing the Project as set out below.

PT MITRATAMA PERKASA (The Contractor)
 PT ASAM-ASAM PORT (The Client)

The Project is a part of the Phase Practical Completion of the project.

This is to certify that the Contractor has completed the works in accordance with the conditions of the Agreement and that the Client has accepted the works in accordance with the conditions of the Agreement.

ASAM-ASAM PORT (The Client)
 PT MITRATAMA PERKASA (The Contractor)

ASAM-ASAM PORT
 Director
 10/08/2023

PT MITRATAMA PERKASA
 Director
 10/08/2023

ASAM-ASAM BARGE LOADING

PT. MITRATAMA PERKASA

CERTIFICATE OF PRACTICAL COMPLETION
SERTIFIKAT PERSILAHAN PRAKTIS

ACREMENT NO. FKP - RC1

This is to certify that the Agreement between the Parties to assist each other in completing the Project as set out below.

PT MITRATAMA PERKASA (The Contractor)
 PT FKP (The Client)

The Project is a part of the Phase Practical Completion of the project.

This is to certify that the Contractor has completed the works in accordance with the conditions of the Agreement and that the Client has accepted the works in accordance with the conditions of the Agreement.

PT MITRATAMA PERKASA (The Contractor)
 PT FKP (The Client)

PT MITRATAMA PERKASA
 Director
 10/08/2023

PT FKP
 Director
 10/08/2023

FKP - RC1

PT. MITRATAMA PERKASA

CERTIFICATE OF PRACTICAL COMPLETION
SERTIFIKAT PERSILAHAN PRAKTIS

ACREMENT NO. FKP - CC2

This is to certify that the Agreement between the Parties to assist each other in completing the Project as set out below.

PT MITRATAMA PERKASA (The Contractor)
 PT FKP (The Client)

The Project is a part of the Phase Practical Completion of the project.

This is to certify that the Contractor has completed the works in accordance with the conditions of the Agreement and that the Client has accepted the works in accordance with the conditions of the Agreement.

PT MITRATAMA PERKASA (The Contractor)
 PT FKP (The Client)

PT MITRATAMA PERKASA
 Director
 10/08/2023

PT FKP
 Director
 10/08/2023

FKP - CC2

HOCK PENG REALTY SDN BHD

CERTIFICATE OF PRACTICAL COMPLETION

ACREMENT NO. HOCK PENG - COAL HANDLING SYSTEM

This is to certify that the Agreement between the Parties to assist each other in completing the Project as set out below.

HOCK PENG REALTY SDN BHD (The Contractor)
 PT HOCK PENG (The Client)

The Project is a part of the Phase Practical Completion of the project.

This is to certify that the Contractor has completed the works in accordance with the conditions of the Agreement and that the Client has accepted the works in accordance with the conditions of the Agreement.

HOCK PENG REALTY SDN BHD (The Contractor)
 PT HOCK PENG (The Client)

HOCK PENG REALTY SDN BHD
 Director
 10/08/2023

PT HOCK PENG
 Director
 10/08/2023

HOCK PENG - COAL HANDLING SYSTEM

HOCK PENG REALTY SDN BHD

CERTIFICATE OF PRACTICAL COMPLETION

ACREMENT NO. HOCK PENG TT 0 - TT 1

This is to certify that the Agreement between the Parties to assist each other in completing the Project as set out below.

HOCK PENG REALTY SDN BHD (The Contractor)
 PT HOCK PENG (The Client)

The Project is a part of the Phase Practical Completion of the project.

This is to certify that the Contractor has completed the works in accordance with the conditions of the Agreement and that the Client has accepted the works in accordance with the conditions of the Agreement.

HOCK PENG REALTY SDN BHD (The Contractor)
 PT HOCK PENG (The Client)

HOCK PENG REALTY SDN BHD
 Director
 10/08/2023

PT HOCK PENG
 Director
 10/08/2023

HOCK PENG TT 0 - TT 1

KPC FACTORY

CERTIFICATE OF TAKEOVER

CONTRACT NO. KPC-001

CONTRACT TITLE: INFRASTRUCTURE FACILITY UPGRADE INSTALLATION

CONTRACTOR: PT. AE AUTOMATION INDONESIA

DATE OF COMPLETION: 11 FEBRUARY 2023

SECTION OF THE WORKS: ALL SECTION OF THE WORKS

DATE OF TAKEOVER: 09 MAY 2023

This is to certify that the Contractor has completed the works in accordance with the conditions of the Agreement and that the Client has accepted the works in accordance with the conditions of the Agreement.

PT. AE AUTOMATION INDONESIA (The Contractor)
 KPC (The Client)

PT. AE AUTOMATION INDONESIA
 Director
 09/05/2023

KPC
 Director
 09/05/2023

KPC UPGADATION

PT. AE AUTOMATION INDONESIA

CERTIFICATE OF TAKEOVER

CONTRACT NO. WAHANA PHASE 1

CONTRACT TITLE: INFRASTRUCTURE FACILITY UPGRADE INSTALLATION

CONTRACTOR: PT. AE AUTOMATION INDONESIA

DATE OF COMPLETION: 11 FEBRUARY 2023

SECTION OF THE WORKS: ALL SECTION OF THE WORKS

DATE OF TAKEOVER: 09 MAY 2023

This is to certify that the Contractor has completed the works in accordance with the conditions of the Agreement and that the Client has accepted the works in accordance with the conditions of the Agreement.

PT. AE AUTOMATION INDONESIA (The Contractor)
 WAHANA PHASE 1 (The Client)

PT. AE AUTOMATION INDONESIA
 Director
 09/05/2023

WAHANA PHASE 1
 Director
 09/05/2023

WAHANA PHASE 1

PT. AE AUTOMATION INDONESIA

CERTIFICATE OF TAKEOVER

CONTRACT NO. WAHANA PHASE 1 - DC 1

CONTRACT TITLE: INFRASTRUCTURE FACILITY UPGRADE INSTALLATION

CONTRACTOR: PT. AE AUTOMATION INDONESIA

DATE OF COMPLETION: 11 FEBRUARY 2023

SECTION OF THE WORKS: ALL SECTION OF THE WORKS

DATE OF TAKEOVER: 09 MAY 2023

This is to certify that the Contractor has completed the works in accordance with the conditions of the Agreement and that the Client has accepted the works in accordance with the conditions of the Agreement.

PT. AE AUTOMATION INDONESIA (The Contractor)
 WAHANA PHASE 1 - DC 1 (The Client)

PT. AE AUTOMATION INDONESIA
 Director
 09/05/2023

WAHANA PHASE 1 - DC 1
 Director
 09/05/2023

WAHANA PHASE 1 - DC 1

PT. AE AUTOMATION INDONESIA

CERTIFICATE OF TAKEOVER

CONTRACT NO. WAHANA PHASE 2

CONTRACT TITLE: INFRASTRUCTURE FACILITY UPGRADE INSTALLATION

CONTRACTOR: PT. AE AUTOMATION INDONESIA

DATE OF COMPLETION: 11 FEBRUARY 2023

SECTION OF THE WORKS: ALL SECTION OF THE WORKS

DATE OF TAKEOVER: 09 MAY 2023

This is to certify that the Contractor has completed the works in accordance with the conditions of the Agreement and that the Client has accepted the works in accordance with the conditions of the Agreement.

PT. AE AUTOMATION INDONESIA (The Contractor)
 WAHANA PHASE 2 (The Client)

PT. AE AUTOMATION INDONESIA
 Director
 09/05/2023

WAHANA PHASE 2
 Director
 09/05/2023

WAHANA PHASE 2

PT. AE AUTOMATION INDONESIA

CERTIFICATE OF TAKEOVER

CONTRACT NO. WAHANA PHASE 2 - BC1

CONTRACT TITLE: INFRASTRUCTURE FACILITY UPGRADE INSTALLATION

CONTRACTOR: PT. AE AUTOMATION INDONESIA

DATE OF COMPLETION: 11 FEBRUARY 2023

SECTION OF THE WORKS: ALL SECTION OF THE WORKS

DATE OF TAKEOVER: 09 MAY 2023

This is to certify that the Contractor has completed the works in accordance with the conditions of the Agreement and that the Client has accepted the works in accordance with the conditions of the Agreement.

PT. AE AUTOMATION INDONESIA (The Contractor)
 WAHANA PHASE 2 - BC1 (The Client)

PT. AE AUTOMATION INDONESIA
 Director
 09/05/2023

WAHANA PHASE 2 - BC1
 Director
 09/05/2023

WAHANA PHASE 2 - BC1



ae.

PT. AE AUTOMOTON INDONESIA

Head Office: Jakarta

Project: WAHANA PHASE 2 - CC1

Site: WAHANA PHASE 2 - CC1

Site of Work: WAHANA PHASE 2 - CC1

Final Assistance Certificate for Waahana Intermediate

Approved By: [Signature]

Date: [Date]

ae.

PT. AE AUTOMOTON INDONESIA

Head Office: Jakarta

Project: WAHANA INTERMEDIATE

Site: WAHANA INTERMEDIATE

Site of Work: WAHANA INTERMEDIATE

Final Assistance Certificate for Waahana Intermediate

Approved By: [Signature]

Date: [Date]

ae.

PT. AE AUTOMOTON INDONESIA

Head Office: Jakarta

Project: WAHANA INTERMEDIATE - BC1

Site: WAHANA INTERMEDIATE - BC1

Site of Work: WAHANA INTERMEDIATE - BC1

Final Assistance Certificate for Waahana Intermediate

Approved By: [Signature]

Date: [Date]

ae.

PT. AE AUTOMOTON INDONESIA

Head Office: Jakarta

Project: WAHANA INTERMEDIATE - BC2

Site: WAHANA INTERMEDIATE - BC2

Site of Work: WAHANA INTERMEDIATE - BC2

Final Assistance Certificate for Waahana Intermediate

Approved By: [Signature]

Date: [Date]

ae.

PT. AE AUTOMOTON INDONESIA

Head Office: Jakarta

Project: WAHANA INTERMEDIATE - CC3

Site: WAHANA INTERMEDIATE - CC3

Site of Work: WAHANA INTERMEDIATE - CC3

Final Assistance Certificate for Waahana Intermediate

Approved By: [Signature]

Date: [Date]

WAHANA PHASE 2 - CC1

WAHANA INTERMEDIATE

WAHANA INTERMEDIATE - BC1

WAHANA INTERMEDIATE - BC2

WAHANA INTERMEDIATE - CC3

ae.

PT. NIRMALA

Head Office: Jakarta

Project: PT NIRMALA

Site: PT NIRMALA

Site of Work: PT NIRMALA

Final Assistance Certificate for Waahana Intermediate

Approved By: [Signature]

Date: [Date]

ae.

PT. NIRMALA MATRANUSA

Head Office: Jakarta

Project: PT NIRMALA - COAL TERMINAL

Site: PT NIRMALA - COAL TERMINAL

Site of Work: PT NIRMALA - COAL TERMINAL

Final Assistance Certificate for Waahana Intermediate

Approved By: [Signature]

Date: [Date]

ae.

PT. NIRMALA MATRANUSA

Head Office: Jakarta

Project: PT NIRMALA - COAL TERMINAL

Site: PT NIRMALA - COAL TERMINAL

Site of Work: PT NIRMALA - COAL TERMINAL

Final Assistance Certificate for Waahana Intermediate

Approved By: [Signature]

Date: [Date]

ae.

PT. DERMAGA PERUSAHAAN

Head Office: Jakarta

Project: PT DERMAGA - CONVEYOR UPGRADING

Site: PT DERMAGA - CONVEYOR UPGRADING

Site of Work: PT DERMAGA - CONVEYOR UPGRADING

Final Assistance Certificate for Waahana Intermediate

Approved By: [Signature]

Date: [Date]

ae.

PT. GUNUNG BAYAN

Head Office: Jakarta

Project: PT GUNUNG BAYAN - CC9-6-16 MOVING CHUTE

Site: PT GUNUNG BAYAN - CC9-6-16 MOVING CHUTE

Site of Work: PT GUNUNG BAYAN - CC9-6-16 MOVING CHUTE

Final Assistance Certificate for Waahana Intermediate

Approved By: [Signature]

Date: [Date]

PT NIRMALA

PT NIRMALA - COAL TERMINAL

PT NIRMALA - COAL TERMINAL

PT DERMAGA - CONVEYOR UPGRADING

PT GUNUNG BAYAN - CC9-6-16 MOVING CHUTE

LIST OF PROJECTS



SL NO	PROJECT NAME	SCOPE	MATERIAL HANDLED	CAPACITY	BELT WIDTH	YEAR OF ORDER PLACEMENT	STAGE OF COMPLETION
01	Malaysian Sheet Glass Berhad, Malaysia	Supply & Installation of; a) Extension of 1 no Belt Conveyor. b) 1 no Belt Conveyor. c) 5 Sets of storage hopper with bin vibrator.	Silica Sand	100 TPH	600 mm	1996	100 %
02	Klang Multi Terminal Sdn. Bhd., Malaysia.	Supply & Installation of; a) 5 nos Belt Conveyors. b) 5 units of dust collection system. c) 6 nos of transfer tower. Complete electrical, Control and telecommunication system	Slag / fertilizer / Gypsum / Coal.	1300 TPH	1050 mm	1997	100 %
03	Tshukisima Kikai Co. Ltd., Vietnam.	Supply & Installation of; a) 12 nos Belt Conveyor.	Raw Sugar	50 TPH	650 / 1100 mm	1998	100 %
04	West Fertilizer Terminal Sdn. Bhd., Malaysia.	Supply & Installation of; a) 4 nos Belt Conveyor. b) 1 no mobile tripper. c) 2 nos transfer tower. d) Complete electrical, Control and telecommunication system.	Fertilizer	1125 TPH	1050 mm	1998	100 %



SL NO	PROJECT NAME	SCOPE	MATERIAL HANDLED	CAPACITY	BELT WIDTH	YEAR OF ORDER PLACEMENT	STAGE OF COMPLETION
05	Tshukisima Kikai Co. Ltd., Vietnam.	Supply & Installation of; a) 12 nos Belt Conveyor.	Raw Sugar	50 TPH	650 / 1100 mm	1998	100 %
06	West Fertilizer Terminal Sdn. Bhd., Malaysia.	Supply & Installation of; a) 4 nos Belt Conveyor. b) 1 no mobile tripper. c) 2 nos transfer tower. d) Complete electrical, Control and telecommunication system.	Fertilizer	1125 TPH	1050 mm	1998	100 %
07	ADM Cocoa Pte Ltd, Singapore	Supply & installation of; a) 5 nos Belt Conveyor. b) 6 nos of scraper conveyor. c) 3 nos of bucket elevator.	Cocoa Beans	200 TPH	750 mm 600 mm 650 mm	1998	100 %
08	ADM Cocoa Pte Ltd, Singapore	Supply & Installation of; a) 1 no belt conveyor.	Cocoa Beans	50 tons per Hour	500 mm	1998	100 %



SL NO	PROJECT NAME	SCOPE	MATERIAL HANDLED	CAPACITY	BELT WIDTH	ORDER VALUE (USD)	YEAR OF ORDER PLACEMENT	STAGE OF COMPLETION
09	Kemira-Kuak Fertilizer Sdn.Bhd. Malaysia	Supply & Installation of: a) Electrical and Control System b) 1 Unit of Dust Control System.	Fertilizer	1000 TPH	-	105,000.00	1999	100 %
10	Fulflex Singapore Pte. Ltd Singapore	Supply & Installation of: a) 6 nos slat chain conveyor. b) 18 nos Tripper car.	Rubber Shell Car	3 Shell Cars per hour	1200 mm & 800 m	230,000.00	1999	100 %
11	Malayan Cement Blue Circle Group. Ipoh, Malaysia	15 nos of belt conveyor	Raw mill & Gypsum	800 TPH	1050 mm & 800 mm	1,342,000.00	2000/01	100%
12	ACES (Asean Bintulu Fertilizers s/b – Bintulu) Sarawak (2nd Job with this client)	4 nos of belt conveyor	Urea	400 / 100 TPH	1200 mm & 600 mm	720,000.00	2001	100%



SL NO	PROJECT NAME	SCOPE	MATERIAL HANDLED	CAPACITY	BELT WIDTH	ORDER VALUE (USD)	YEAR OF ORDER PLACEMENT	STAGE OF COMPLETION
13	FAM, Forderanlagen Magdeburg. Germany	Fabrication & supply of Tripper Car. Installation of Tripper Car & Semi-Portal Reclaimer at Asean Bintulu Fertilizer	Urea	440 TPH	1200 mm	165,000.00	2001	100%
14	SIS '88 Pte. Ltd. Singapore	Supply and Installation :- 1 no Screw Conveyor 1 no Hopper & Screw Conveyor 1 no Belt Conveyor & Modification work	White Sugar	100TPH 60TPH	500 mm	155,000.00	2002	100%
15	Zhongshan Perfect Co.Ltd. China	Conveyor Automation System	Unit system	-	Various	3,880,000.00	2002	100%
16	Indonesia Mining Company	Inloading Conveyor Upgrade Work	Coal	2500TPH	1400mm	415,000.00	2002/03	100%



SL NO	PROJECT NAME	SCOPE	MATERIAL HANDLED	CAPACITY	BELT WIDTH	ORDER VALUE (USD)	YEAR OF ORDER PLACEMENT	STAGE OF COMPLETION
17	OCI Engineering Ltd - Meren Project, Jordan	Design and supply :- 10 nos. rubber belt conveyors	Silica Sand	55TPH 130TPH	450mm 750mm	102,000.00	2003	100%
18	ACES (Asean Bintulu Fertilizers S/B – Bintulu) Sarawak (3RD Contract form this client)	Belt conveyors, Belt Weigher, Modification works for Sampler etc	Fertilizer	100 TPH	650 mm 800 mm	192,000.00	2003	100%
19	Rekayasa Industri Malaysia Sdn.Bhd.	Design ,Fabrication and Supply of Bucket Elevator Flex 5 Cleated Belt Conveyors	Phospate Rock/ MAP/DAP/ MOP	25-90 TPH	600 mm 750 mm 900 mm	270,000.00	2003	100%
20	Rekayasa Industri Malaysia Sdn.Bhd.	Design ,Fabrication and Supply of 2 nos Receiver Units c/w Hopper	Phospate Rock/ MAP/DAP/ MOP	50~90 TPH	2200 mm	123,000.00	2003	100%



SL NO	PROJECT NAME	SCOPE	MATERIAL HANDLED	CAPACITY	BELT WIDTH	ORDER VALUE (USD)	YEAR OF ORDER PLACEMENT	STAGE OF COMPLETION
21	KELA - Indonesia	Overland Conveyor System- 1 Km long Belt conveyor.	Coal Handling	600 TPH	1000 mm	1,000,000.00	December 2003	100%
22	PGBOC - Indonesia	Barge Loading System	Coal Handling	1500 TPH	2000 mm 1200 mm	385,000.00	February 2004	100%
23	PNM – Indonesia	Coal import jetty extension	Coal Handling	2400 TPH	1400 mm	855,000.00	February 2004	100%
24	PGBOC-Indonesia	Design,Fabrication,Supply , Testing and Commissioning of- Coal Handling 3 No's Belt Conveyors (Crusher Supplied by Client)	Coal Handling	1200 TPH	900 mm	957,000.00	March 2004	100%



SL NO	PROJECT NAME	SCOPE	MATERIAL HANDLED	CAPACITY	BELT WIDTH	ORDER VALUE (USD)	YEAR OF ORDER PLACEMENT	STAGE OF COMPLETION
25	MMCEG-GAMUDA JV	Design,Fabrication,Supply , Testing and Commissioning of- Lime Handling 2 No's Belt Conveyors	Lime Stone Handling	900 TPH	1200 mm	218,420.00	March 2004	100%
26	PNME - Indonesia	Design, Supply, Installation Testing and Commissioning of 9 nos. Coal Stockpiles & facilities	Coal Handling	2500 TPH 4000 TPH	1400mm 1600mm	6,000,000.00	May 2004	100%
27	SIS '88 Pte. Ltd. Singapore	Supply and Installation :- 3 Nos Belt Conveyor	White Sugar	100TPH	1000 mm	1,687,000.00	July 2004	100%
28	Kalimantan Floating Terminal, Indonesia	Design, Fabrication, Supply , Testing and Commissioning of- Coal Handling Conv. System	Coal	1000 TPH	1000 mm	1,800,000.00	December 2004	100%



SL NO	PROJECT NAME	SCOPE	MATERIAL HANDLED	CAPACITY	BELT WIDTH	ORDER VALUE (USD)	YEAR OF ORDER PLACEMENT	STAGE OF COMPLETION
29	BPB Gypsum Plant Malaysia	Design, Fabrication, Supply, Testing and Commissioning of Screw Conv. Bucket Elevators, Belt Conv.	Gypsum	Range - 2 TPH to 40 TPH	Belt-800mm	278,000.00	December 2004	100%
30	Dumai Fibre Engineering Resources Indonesia	Design, Fabrication, Supply, Testing and Commissioning of Belt Conv.	Wood Chips	Range - 375 TPH to 1250 TPH	Belt-1200mm 1600mm	1,950,000.00	August 2005	100%
31	FFM, Malaysia	Design, Fabrication, Supply, Testing and Commissioning of Grain Handling Belt Conv.System	Grain	Range - 1000 TPH	Belt-1000mm	535,000.00	September 2005	100%
32	Norscan-Tech Limited	Design, Fabrication, Supply, Testing and Commissioning of Chip Handling System for FL2C	Wood Chips	Range - 375 TPH to 1250 TPH	Belt-1200mm 1600mm	3,800,000.00	May 2006	100%



SL NO	PROJECT NAME	SCOPE	MATERIAL HANDLED	CAPACITY	BELT WIDTH	ORDER VALUE (USD)	YEAR OF ORDER PLACEMENT	STAGE OF COMPLETION
33	Asean Bintulu Fertilizer Sdn. Bhd.	Design, Fabrication, Supply, Upgrade, Testing and Commissioning of Urea Handling System	Urea	From 450TPH - 1000TPH	Belt- 1200 to 1600mm	3,300,000.00	July 2007	100%
34	Sino Ling Tao Resources	Design, Fabrication, Supply, Installation, Testing and Commissioning of Barge Coal Handling System	Coal	1000TPH / 1800TPH	1000mm 1200mm	1,100,000.00	August 2007	100%
35	PT Wahana Baratama	Design, Fabrication, Supply, Installation, Testing and Commissioning of Coal Handling – Phase 2 (Crusher supply by client)	Coal	3000TPH	1200mm and 1400mm	1,400,000.00	November 2007	100%
36	Great Southern – Albany Project	Design, Fabrication, Supply, Installation, Testing and Commissioning of Wood Chip Handling System	Wood Chips	1600TPH	1050mm 1400mm 2500mm	450,000.00	October 2007	100%



SL NO	PROJECT NAME	SCOPE	MATERIAL HANDLED	CAPACITY	BELT WIDTH	ORDER VALUE (USD)	YEAR OF ORDER PLACEMENT	STAGE OF COMPLETION
37	PT Gunung Seniyur	Design, Fabrication, Supply, Installation, Testing and Commissioning of Coal Handling System	Coal	2000TPH	1200mm	731,752.00	March 2008	100%
38	PT Gunung Sari	Design, Fabrication, Supply, Installation, Testing and Commissioning of Coal Handling System	Coal	2000TPH	1200mm	829,129.50	March 2008	100%
39	PT-Pec Tech (Riau MHW 7)	Design, Fabrication, Supply, Testing and Commissioning of Wood Chip handling system for MHW-7	Wood Chips	570TPH	1200mm 1400mm	1,800,000.00	November 2007	100%
40	PT Dermaga Perkasapratama	Design, fabrication, supply, installation, testing & commissioning of Coal Handling System for RC 9 & 13	Coal	4000TPH	1600mm	298,975.95	October 2007	100%



SL NO	PROJECT NAME	SCOPE	MATERIAL HANDLED	CAPACITY	BELT WIDTH	ORDER VALUE (USD)	YEAR OF ORDER PLACEMENT	STAGE OF COMPLETION
41	Asean Bintulu Fertilizer Sdn. Bhd.	Design, fabrication, supply, installation, testing & commissioning of Bulk Urea Shiploading Facility	Urea	1000thp	1600mm	1,750,000.00	July 2007	90%
42	Hock Peng Realty Sdn. Bhd.	Design, fabrication, supply, testing & commissioning of Coal handling System including crushing system for power plant	Coal	500 TPH	900mm	3,053,247.00	December 2007	100%
43	Norscan-Tech Limited	Design, Fabrication, Supply, Testing and Commissioning of Wood Chip handling system for Kutai Chip Mill	Wood Chips	1350TPH	650mm 1000mm 1200mm 1800mm 2400mm	3,209,425.52	January 2008	100%
44	Pt Perkasa Inakakerta Phase 2	Design, Fabrication, Supply, Installation, Testing & Commissioning of Coal Handling System for CC-1, RC 1 to 4 (Crusher supply by client)	Coal	3200 TPH 3000 TPH 4000 TPH	1400mm 1600mm 1800mm	1,345,250.60	February 2008	100%



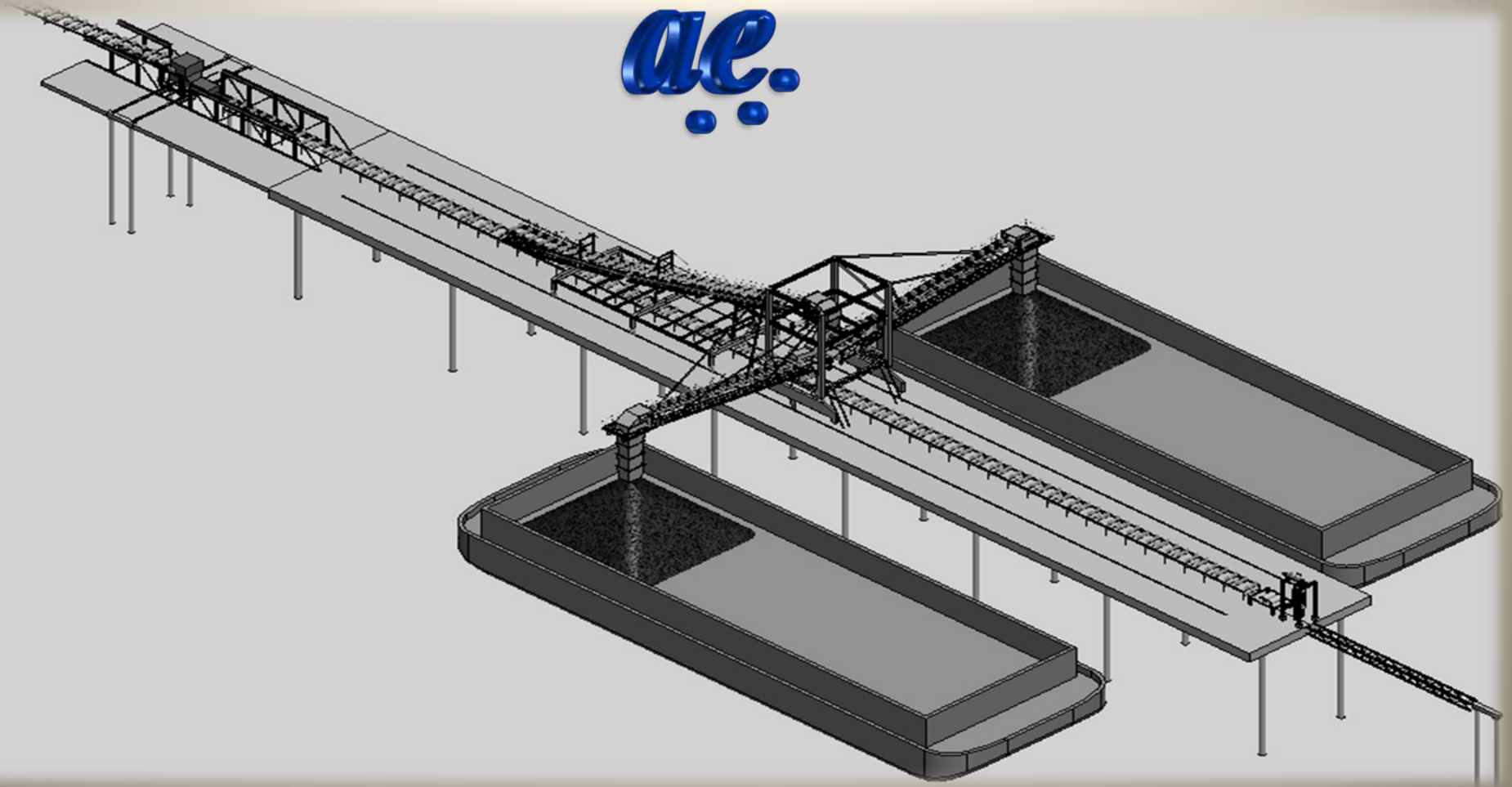
SL NO	PROJECT NAME	SCOPE	MATERIAL HANDLED	CAPACITY	BELT WIDTH	ORDER VALUE (USD)	YEAR OF ORDER PLACEMENT	STAGE OF COMPLETION
45	PT Dermaga Perkasapratama	Design, Fabrication, Supply, Installation, Testing & Commissioning of Drawdown Hopper for RC-1, 2,3,4,5,6,7 & 8	Coal	200 TPH	1400mm	481,920.00	March 2008	100%
46	PT Kutai Chip Mill	Supply of spare for 2 years operations.	Wood Chips	1350TPH	650mm 1000mm 1200mm 1800mm 2400mm	120,000.00	March 2008	100%
47	PT Mitratama Perkasa	Design & development, fabrication, supply of Coal Handling Facilities (CHF) at Port	Coal	2200 TPH	1400mm	13,960,000.00	June 2008	100%
48	Pt Indonesia Pratama (Empaku)	Intermediate Stockpile Conveyor System	Coal	1000 TPH	1200mm	1,456,484.32	July 2008	100%
49	PT Wahana Baratama Mining	Supply, Fabricate, Installation and Commissioning of Structural, Mechanical and Electrical for BC1, Crusher House, BC-2, CC-3 Conv and Stockpiles Nos 1 & 2 (2 Nos) and its associated facilities (Crusher supply by client)	Coal	1500 TPH 2000 TPH	1200mm	1,813,250.78	December 2008	100%



SL NO	PROJECT NAME	SCOPE	MATERIAL HANDLED	CAPACITY	BELT WIDTH	ORDER VALUE (USD)	YEAR OF ORDER PLACEMENT	STAGE OF COMPLETION
50	Asean Bintulu Fertilizer Sdn. Bhd.	Upgrading of BUS1 Reclaimer Travel Drive	Urea	500 TPH	1000mm	61,860.00	December 2008	100%
51	PT. Kaltim Supa Coal	Tabang Coal Fired Power Plant	Coal	1 X 8 MW	NA	8,420,000	December 2008	100%
52	Asean Bintulu Fertilizer Sdn. Bhd.	Upgrading of BUS2 Tripper Car PLC from S5 to S7	Urea	500 TPH	1000mm	99,250.00	March 2009	100%
53	SIS'88 Pte Ltd	Design, fabricate & supply of 500BW Mobile Belt Conveyor	Sugar	80 TPH	500mm	48,500.00	April 2009	100%
54	Lafarge Rawang Cement Plant	Fabrication, Supply, Installation, Testing & Commissioning of Clinker Conveyor	Clinker	500 TPH	800mm	65,000.00	October 2009	100%
55	PT Kaltim Prima Coal	Shiploader Facility Upgrade Installation	Coal	4500 TPH upgrade to 9000 TPH	1100mm & 1800mm	6,808,971.68	November 2009	100%
56	PT Perkasa Inakakerta	Supply, Fabricate, Installation and Commissioning of Structural, Mechanical and Electrical Works for Extension Coal Export Jetty Facility including 2 No's Shiploader	Coal	4000 TPH	1400mm 1600mm	6,300,000	May 2010	100%



SL NO	PROJECT NAME	SCOPE	MATERIAL HANDLED	CAPACITY	BELT WIDTH	ORDER VALUE (USD)	YEAR OF ORDER PLACEMENT	STAGE OF COMPLETION
57	Lafarge Cement Malaysia – Ipoh	Conveyor System	Cement Bags	120 Bag / hr	650mm	562,500	July 2010	100%
58	Kutai Chip Mill	Conveyor System	Wood Chips	-	650 - 2400 mm	1,758,500.00	August 2010	100%
59	Malaysian NPK Fertilizer Sdn Bhd	Bucket Elevator and Belt Conveyor	Fertilizer (MAP/dap/mop/urea)	90 tph	650mm (BW) 1060mm (Bucket)	560,000.00	Nov 2010	100%
60	PT. Kariangau Power	Coal Fired Power Plant	Coal	2 x 15 MW	NA	33,800,000.00	January 2011	Under Execution
61	PT Wahana Baratama Mining	Design, Supply, Fabrication, Installation and Commissioning of Structural, Mechanical and Electrical for Extension of Coal Export Jetty Facility including 1 no of Shiploader	Coal	2200/3000 TPH	1400mm	2,250,000.00	September 2011	Under Execution
62	LUMUT BULK TERMINAL, MALAYSIA	Design fabrication supply of Apron Feeder	Coal	-	-	-	June 2012	Under Execution
63	MDB WING BARGE LOADER	Design, fabrication and supply of Travelling type wing barge loader	Coal	4500 TPH	1800mm	3,305,450.00	September 2012	Under Design Development



AE – “AWARENESS – ADAPTABILITY – ADVANCEMENT –
ELITE”

INNOVATION – INVENTION – IMPLEMENTATION