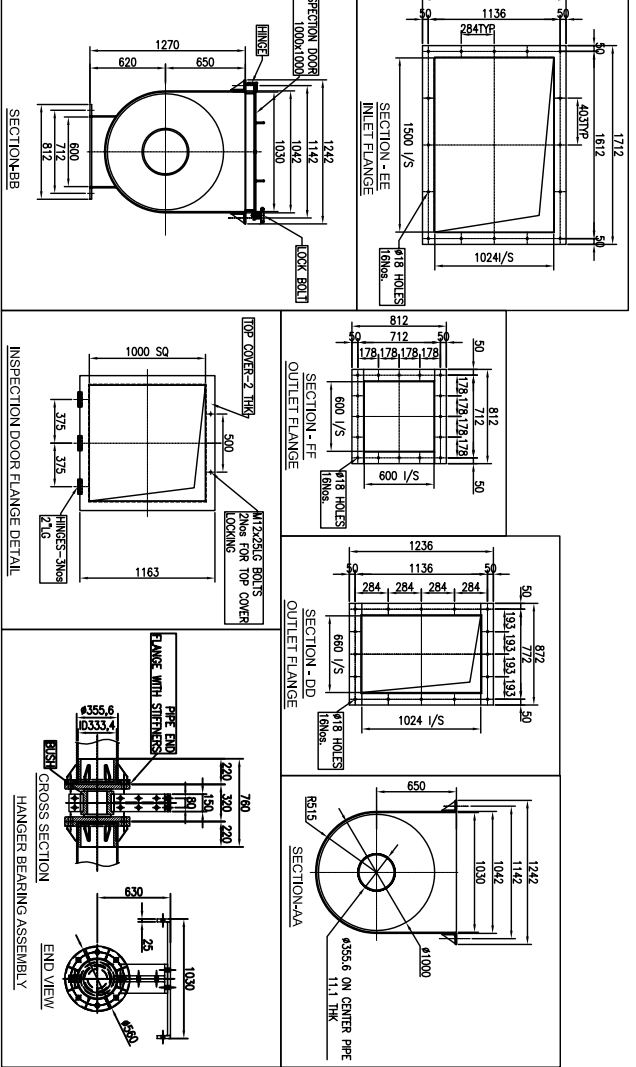
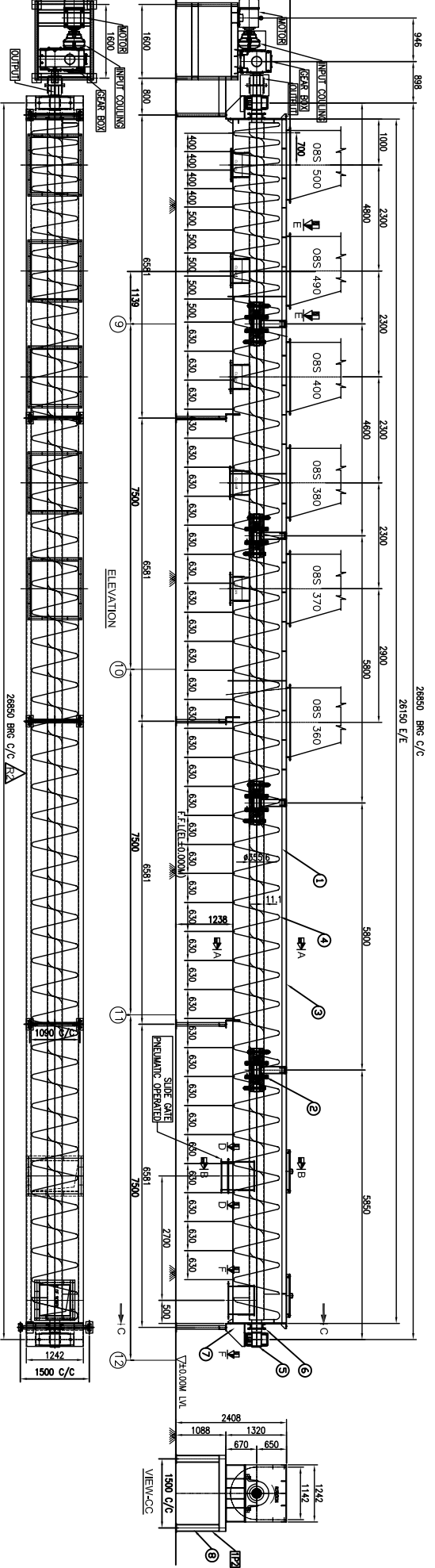


28850 BRG C/C  
26150 E/E



| TECHNICAL SPECIFICATION     |  |
|-----------------------------|--|
| EQUIPMENT                   | U-TROUGH SCREW CONVEYOR                        |
| EQUIPMENT TAG No.           | 08C410   |
| CONVEYOR SIZE               | Ø1000X28150L.G.END/END                         |
| CAPACITY(GATED/DESIGNED)    | 76.5 / 84.15 TPH                               |
| MATERIAL HANDLED            | REFINED SUGAR                                  |
| BULK DENSITY (VOLUME/POWER) | 850/990 KG/CUM                                 |
| MAXIMUM PARTICLE SIZE       | 2MM  |
| MATERIAL TEMPERATURE        | 30-60° C                                       |
| SCREEN SPEED                | 14 RPM   |
| FEED FROM                   | CENTRIFUGAL                                    |
| DISCHARGE TO                | BELT CONVEYOR (T/C011) & S CONVEYOR (08C420)   |
| SCREW DIAMETER              | Ø1000MM  |
| SCREW PITCH                 | 400MM, 500M & 630M                             |
| SCREW FLIGHT THICKNESS      | 8MM  |
| MAT. OF CONST OF FLIGHT     | SS409M   |
| CENTER PIPE                 | 355.6 DDY11.1THK, MOCSS409M                    |
| U-TROUGH THICKNESS/MOC      | 6THK SS409M                                    |
| END PLATE                   | 12THK SS409M                                   |
| TOP COVER                   | 3.15THK SS409M                                 |
| DRIVE/ION DRIVE SHAFT MOC   | SS409M   |
| DRIVE/ION DRIVE END SHAFT   | PLUMMER BLOCK(SD538) BRG-Z2239CK, SLEVE-H 3138 |
| BRG HOUSINGS                | L.RING-FRB 10240                               |
| DRIVE/ION DRIVE SHAFT MOC   | SS409M   |
| HANGER BEARING BUSH         | TER-ON   |
| DRIVE DETAIL                |  |
| 1.MOTOR                     |  |
| RATING                      | 37 KW  |
| SPEED                       | 980 RPM  |
| FRAME SIZE                  | 250M   |
| PROTECTION                  | IP65 RATING & FLAME PROOF                      |
| VFD PROVISION               | MOTOR SHALL BE COMPATIBLE WITH VFD             |
| 2.GEAR BOX                  |  |
| TYPE                        | HELICAL  |
| SIZE                        | H-3315   |
| RATIO                       | 70:61  |
| TYPE                        | FLUID COUPLING                                 |
| SIZE                        | SDFC 450                                       |
| TYPE                        | GEAR COUPLING                                  |
| SIZE                        | FGC-9  |
| MODEL                       | NEESEM/W (AS PER PROTOCOL)-TNO                 |
| QTY                         | TNO  |