

FOR SALE

Logemann 345F-AT Baler (2 machines)

Available Summer 2009 *

- 2 machines
- 200 HP each
- Both recently relined
- Both are very reliable and in very good condition
- Original manuals available
- Spare parts inventory available
- All electrical panels and controls are in excellent condition and will be tagged
- All piping available
- Installed in 1985



Overview of the two Balers



Baler in Operation (MSW 2200 # Bales)

** Tours can be scheduled for serious buyers*



Contact:
RRT Design & Construction
125 Baylis Road
Melville, NY 11747-3895
631-756-1060 (office)
631-756-1064 (fax)
<http://www.rrtenviro.com>

Ask for Bob LaBua ext. 125
rlabua@rرتenviro.com

FOR SALE (cont'd)

Logemann 345F-AT Baler (2 machines)

LBC - 496

LOGEMANN BROTHERS COMPANY

345F-AT-SW SOLID WASTE BALER - MACHINE DATA

Box Dimensions: 60" Wide x 36" Deep x 178" Long.

Box Opening: 58" x 120"

Bale Size: 41" Wide x 36" Deep x 60" Long. (Bale will expand to some extent after ejection from compression chamber, to approximately 41" Wide x 38" High x 64" Long).

Bale Weight: 2000# to 2500#

Baling Cycle: 120 seconds - based on loose material requiring three strokes to make a bale.

Compression: 12" Cylinder - 170 tons force.

Bale ejector: 9" Cylinder - 95 tons force.

Hydraulic Circuit: 3000 PSI maximum pressure using Vickers Vane Type Pumps.

Oil Filtering: Combination of intake screens and replaceable cartridge type micron filters.

Oil Cooling: Water to Oil cooling is standard. Air to oil cooling is optional.

Automatic Wire Tier: Hydraulically operated basic U.S. Steel model 331 round steel tying device using #11 gauge wire.

Electric Motors: Two (2) 100-HP, 1800 RPM motor for main hydraulic system.

One (1) or Two (2) auxiliary motors depending on type of oil cooler required.

Motors are drip-proof type, 3 Phase, 60 Cycle, 230/460 Volts.

Electrical Control: One (1) NEMA 12 Control Cabinet containing main circuit breaker, across-the-line starters for 460 volt power, control transformer and control relays wired to terminal strips.

One (1) Operator's Station containing control switches and indicating lights wire to terminal strips.

Control is designed for manual, semi-automatic and automatic operation.

Shipping Weight: 68,000.# approximate.

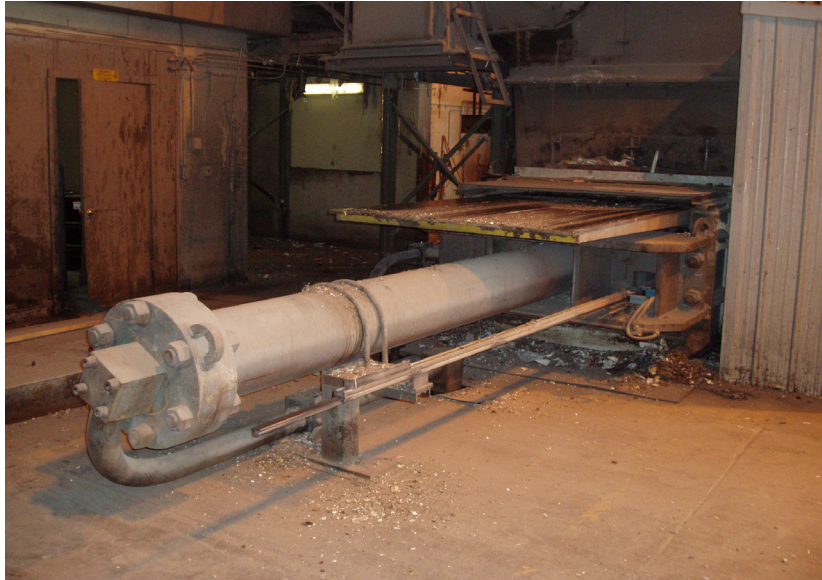


Contact:
RRT Design & Construction
125 Baylis Road
Melville, NY 11747-3895
631-756-1060 (office)
631-756-1064 (fax)
<http://www.rrtenviro.com>

Ask for Bob LaBua ext. 125
rlabua@rrtenviro.com

FOR SALE (cont'd)

Logemann 345F-AT Baler (2 machines)



12 inch Main (Gathering) Cylinder / 170 Tons Force



9 inch Ejection Cylinder / 95 Tons Force

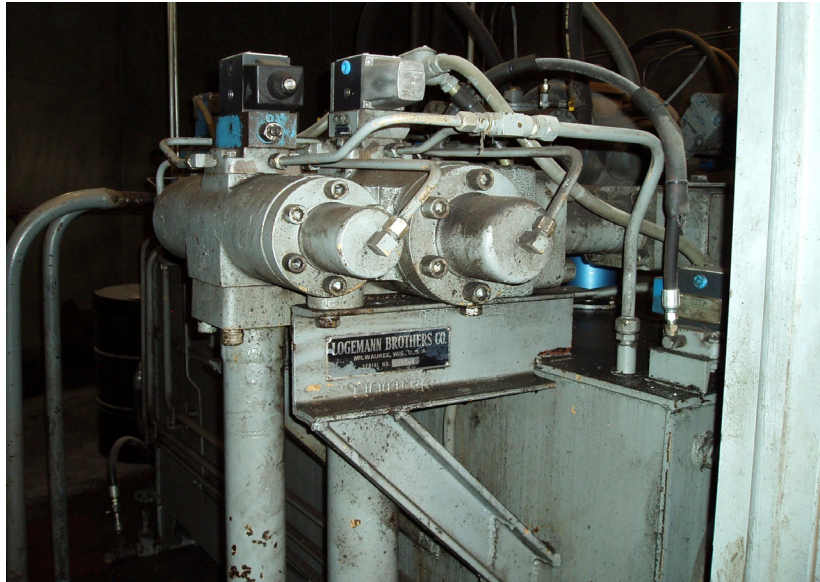


Contact:
RRT Design & Construction
125 Baylis Road
Melville, NY 11747-3895
631-756-1060 (office)
631-756-1064 (fax)
<http://www.rrtenviro.com>

Ask for Bob LaBua ext. 125
rlabua@rرتenviro.com

FOR SALE (cont'd)

Logemann 345F-AT Baler (2 machines)



Hydraulic Power Unit



Hydraulic Power Unit (Two - 100 Hp Motors)



Contact:
RRT Design & Construction
125 Baylis Road
Melville, NY 11747-3895
631-756-1060 (office)
631-756-1064 (fax)
<http://www.rrtenviro.com>

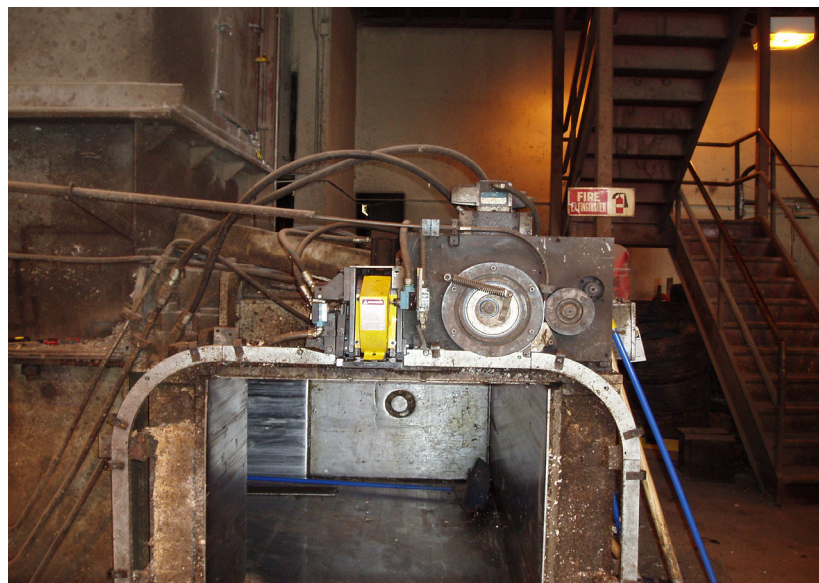
Ask for Bob LaBua ext. 125
rlabua@rrtenviro.com

FOR SALE (cont'd)

Logemann 345F-AT Baler (2 machines)



Hydraulic Power Unit (Two - 100 Hp Motors)



**Ejection Chamber & Wire Strapper
(US Steel Model 331)**



Contact:
RRT Design & Construction
125 Baylis Road
Melville, NY 11747-3895
631-756-1060 (office)
631-756-1064 (fax)
<http://www.rrtenviro.com>

Ask for Bob LaBua ext. 125
rlabua@rrtenviro.com