



HEATH & SHERWOOD

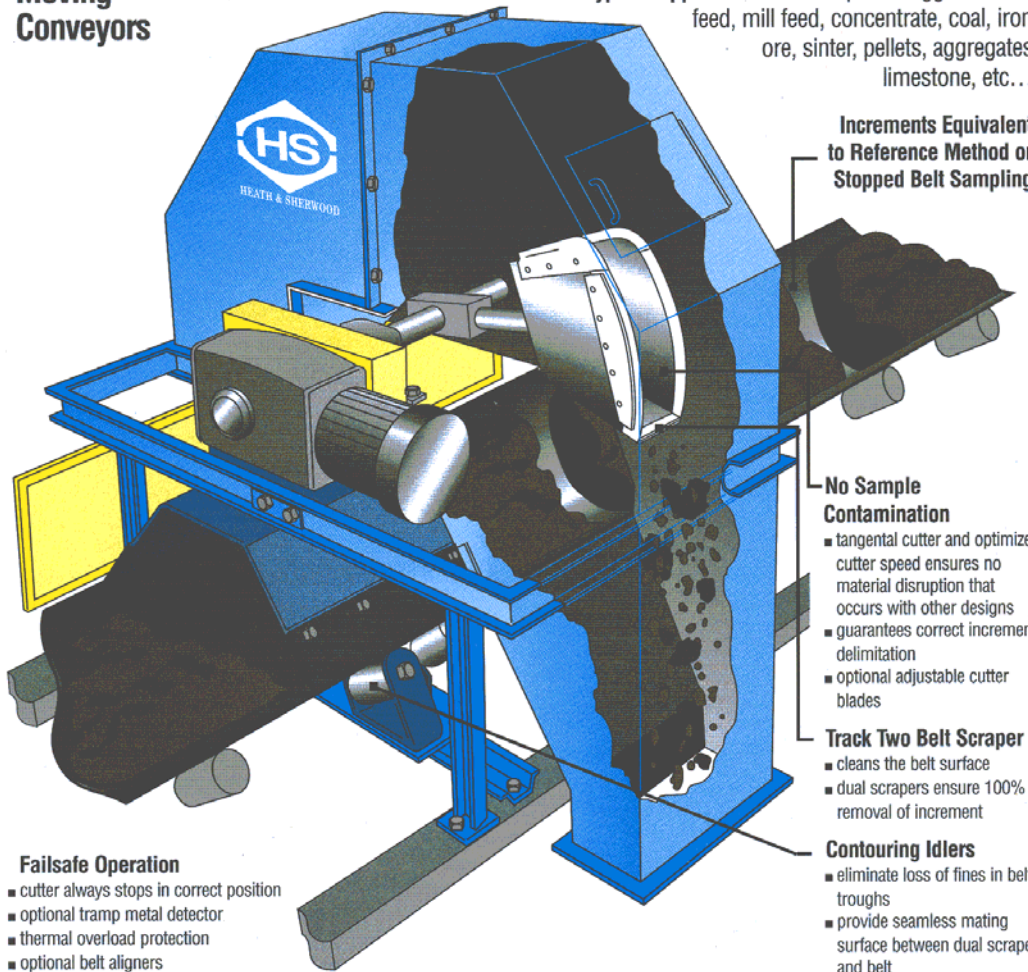
ARM™

Automated Reference Method Sampler

Representative Sampling From Moving Conveyors

Increase Profits from your process by accurately sampling of fines to coarse material from a moving conveyor.

Typical Applications: Leach pad or agglomerator feed, mill feed, concentrate, coal, iron ore, sinter, pellets, aggregates limestone, etc...



Increments Equivalent to Reference Method or Stopped Belt Sampling

No Sample Contamination

- tangential cutter and optimized cutter speed ensures no material disruption that occurs with other designs
- guarantees correct increment delimitation
- optional adjustable cutter blades

Track Two Belt Scraper

- cleans the belt surface
- dual scrapers ensure 100% removal of increment

Contouring Idlers

- eliminate loss of fines in belt troughs
- provide seamless mating surface between dual scraper and belt

Failsafe Operation

- cutter always stops in correct position
- optional tramp metal detector
- thermal overload protection
- optional belt aligners

Very Easy to Install

- modular package retrofits to existing conveyors
- minimal process interruption
- no special tools required
- local manual and central control panels

Robust Construction

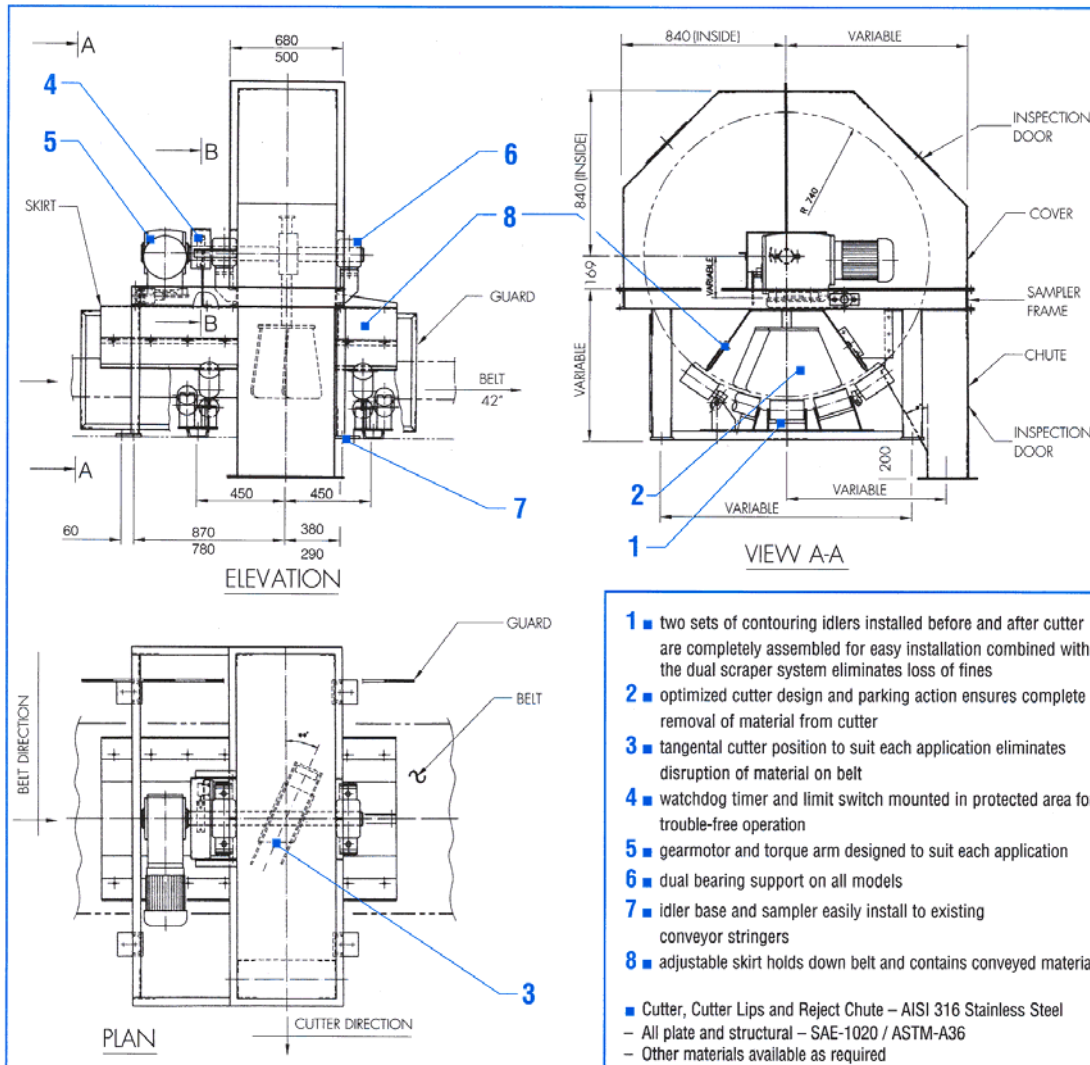
- gearmotor and cutter designs field tested
- sized to suit each application ensures uniform cutter speed across the belt
- gearmotor torque arm and counterweight provides smooth operation
- built to Heath & Sherwood's high standard of quality and reliability
- custom designs available

ARM™

Automated Reference Method Sampler



Specifications



Heath & Sherwood (1964) Limited
 Box 340 Kirkland Lake, Ontario
 Canada P2N 3J2

Tel. (705) 567-5313
 Fax. (705) 568-8545

Heath & Sherwood (USA) Inc.
 7887 East Belleview Avenue
 Suite 1100
 Englewood, Colorado 80111

Tel. (303) 773-2720
 Fax (303) 773-2970

Representatives
 Worldwide