

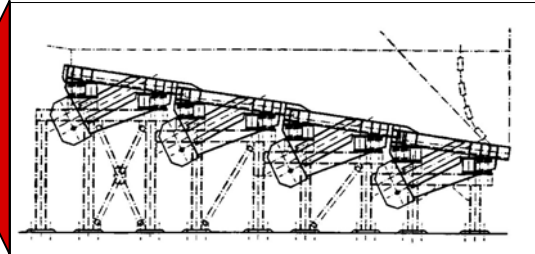
# THE TITAN SYSTEM



## FOR DISCHARGING TRUCK DUMP & RAILCAR UNLOADING STATIONS



A Truck Dump Station



### Unique TITAN Features:

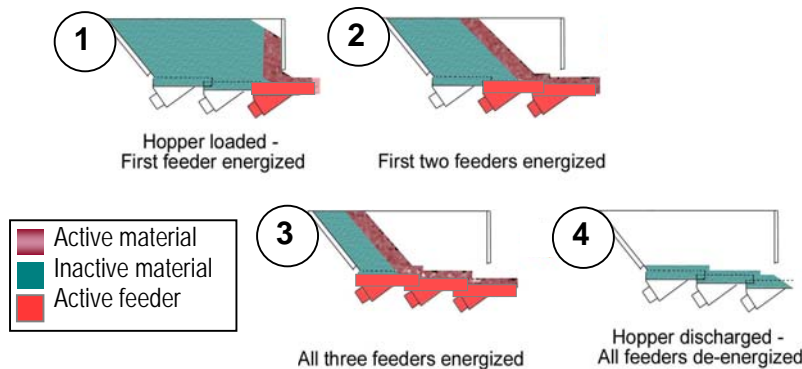
The TITAN Multi-Feeder Discharge System provides the best solution for discharging materials from long slotted hoppers, stockpiles, or unloading stations. Chain conveyors or reciprocating feeders typically discharge from the back end of the hopper causing compaction at the discharge end. The TITAN incorporates a series of heavy-duty vibratory feeders that are electronically interlocked. Only the feeder nearest the free flowing edge of material operates. This virtually eliminates compaction problems. See Figure 3.

This special design also reduces energy consumption and thus utility costs, reduces machine wear, and reduces the head load the feeder must overcome to move the material.

### Special Benefits of the TITAN System:

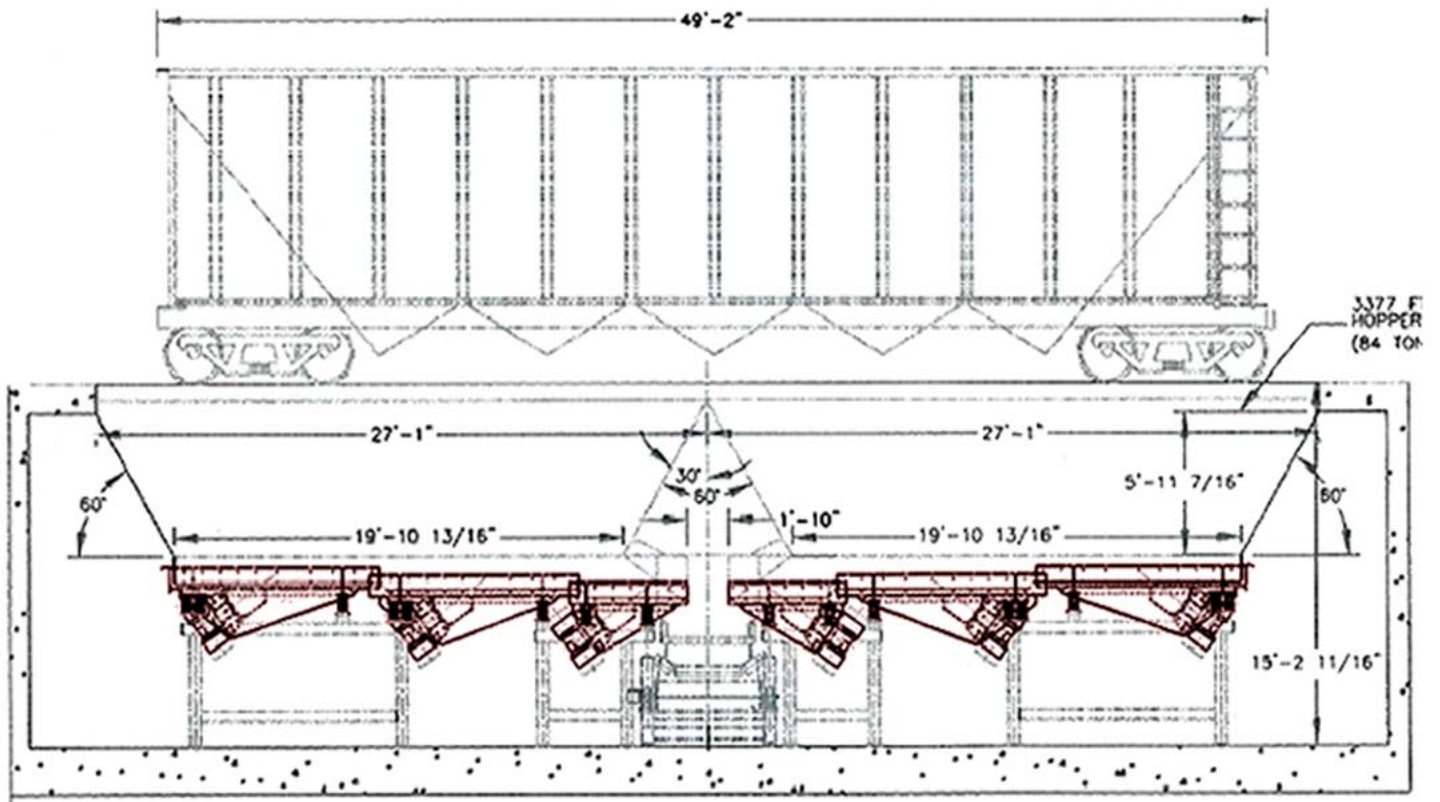
- **Low energy consumption** – Feeders operate at the free flowing edge of the material only.
- **Electronically Adjustable** – Pre-set capabilities can handle various types of materials from the same hopper.
- **Material Compaction Avoided** – Unique front to back material flow prevents compaction at the discharge end of the hopper.
- **Reduced Machine Wear and Maintenance Costs** – Efficient system design and low maintenance vibratory feeders.
- **High Storage Capacities** – Up to 3000 cubic meters.
- **Reduced Impact Damage** – A residual layer of material remains on the feeders to protect against impact damage when charging the hopper.

### How it Works:



Call to request a free Video on CD of the TITAN in action!

The TITAN as typically installed under a Railcar Unloading Station Hopper:



A TITAN under a long slotted hopper:

