

Product News

Sterling Systems & Controls: Turning Old Tires into useable Materials

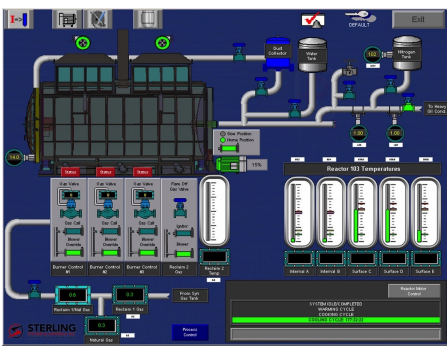
Edited by on 7. Mar. 2018

Sterling (IL), United States -

Primary Automation Components

The dual reactor process is controlled by an automation system designed and provided by Sterling Systems & Controls, Inc. The automation system includes a desktop PC with dual monitors, a PanelView Plus 6 running Rockwell's FactoryTalk View ME (machine edition) automation software, and custom engineering and software by Sterling Systems. Also included is the PLC/Motor Starter control panel, which houses the PLC, main disconnect breaker, motor starters and the variable frequency drives for the reactors. Sterling Systems automation system also integrated process control with the company network using Sterling's WebCentral application software.

WebCentral



Sterling Systems built all electrical and control panels,

did system engineering of all components, custom application engineering and also implemented its WebCentral software. WebCentral is a browser based application that allows you to access the database of the Sterling Systems control system. You can review and print historical reports and change system parameters from a remote PC, so long as the PC resides on the same network as Sterling Systems automation control system. Because WebCentral is browser based, it is very simple and intuitive to use. It is ideal for applications where a variety of individuals need to access information from the control system in a secure, reliable and simple manner. In this application of WebCentral the user could remotely view reactor data in graph form, change system parameters, and search for, view and print historical data.