

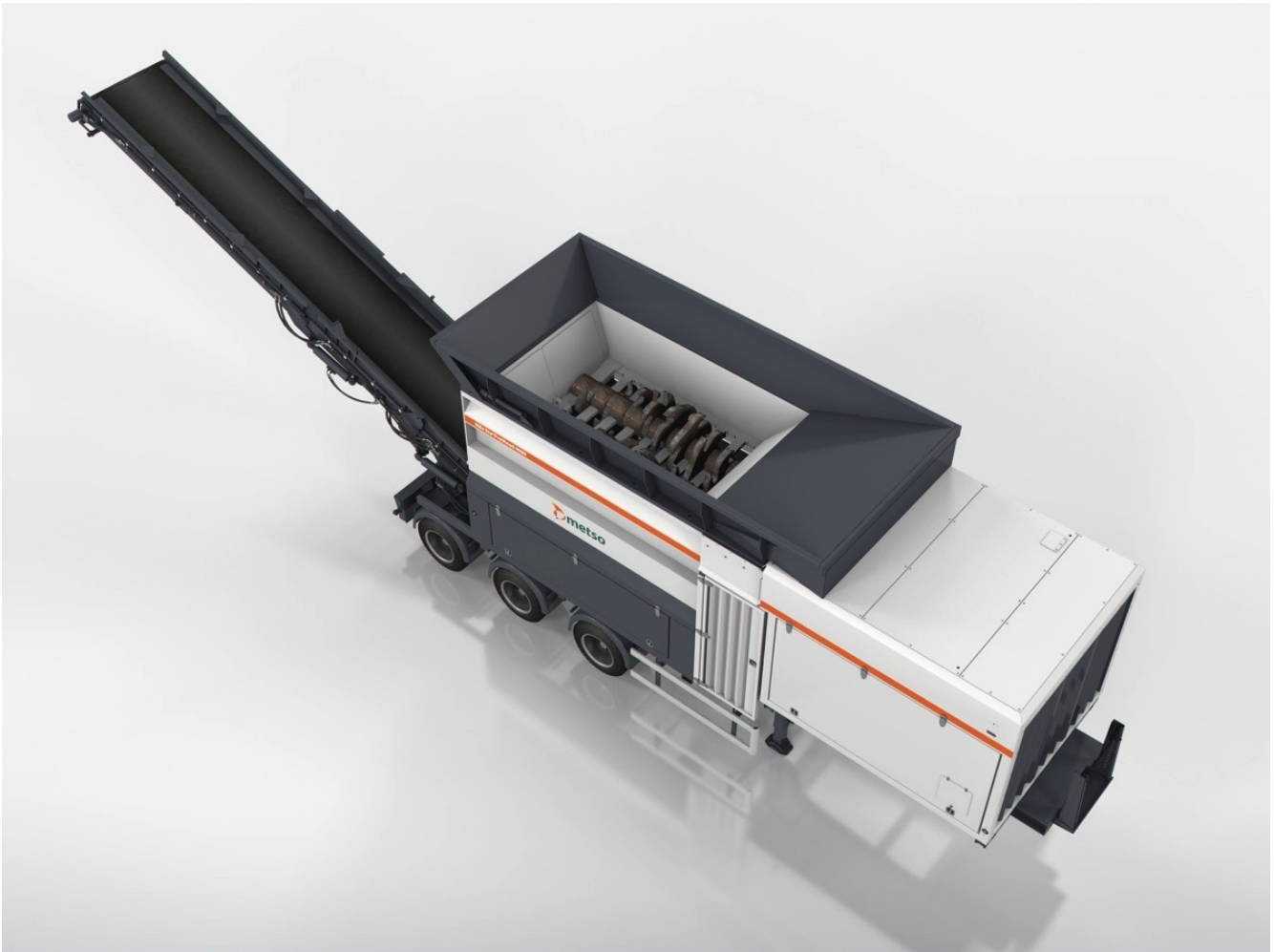
Produktneuheiten

Metso at IFAT China: More Uptime for M&J Shredder with a better Service set up

Bearbeitet von am 3. Mai 2018

Helsinki, Finnland –

In China, more than 70 Metso waste shredders are currently in operation. Globally, more than 800 Metso shredders are contributing to waste recycling processes. "We are very proud that many high-profile waste processing companies in China rely on our proven shredding technology. We are committed to further developing our solutions and service capabilities to help our customers get more out of their assets," says Ou Zeng, Sales Manager Waste Recycling, Metso in China.



An extensive Range of Services

The comprehensive waste recycling product range, covering pre- and fine-shredding technologies, is supported by an extensive scope of services from Metso. For example, customers can benefit from parts services to maximize the value with the right parts at the right time. Metso also offers field service agreements that can be tailored based on the customer's needs. With preventive maintenance services, the target is to improve the performance of the installed equipment.

Outstanding Pre-Shredder Performance for various Needs

Metso's M&J pre-shredding technology for stationary and mobile plants is based on a powerful hydrostatic drive system, proficient knife design and open cutting table. These feature and other distinct technical advantages benefit customers who are looking for a robust high-capacity shredder for continuous use at a high run rate even with hard and abrasive materials.

Homogenous Output of Fine-Shredders increases the Value

Metso's M&J fine-shredders handle a wide range of different materials and deliver very stable and homogenous output that is extremely suitable for Refuse Derived Fuel RDF production. With Metso's fine-shredder, customers can achieve a throughput of up to 28 tons per hour, depending on the output size. The multi-edged shaft is fitted with a patented knife system and smart-engineering to reduce real-life operating costs.

Seeking recognized Partners in China

During the exhibition, Metso is also interested in talking to potential partners to join its global distributor network. Today, Metso's global waste recycling community has about 25 official distributors and agents. Accredited Metso distributors provide support for customers both in equipment and services.