



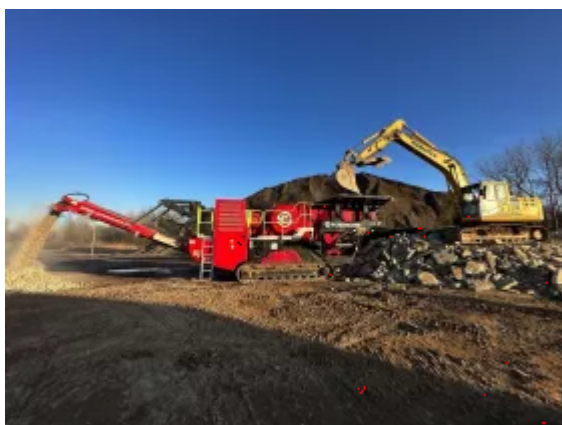
Product News

Introducing the new Screencore XJ Dual-Power Tracked Jaw Crusher

Edited by on 21. Jun. 2023

Coalisland, United Kingdom –

Screencore has from its very beginning produced a range of compact and modern mobile crushing, screening and stockpiling equipment, purpose built using the most up to date manufacturing techniques. The company is now pleased to announce the launch of its latest development, the Screencore XJ Dual-Power tracked jaw crusher.



From its base in Coalisland, Northern Ireland, Screencore has in a relatively short time period developed a range of modern mobile crushing, screening, stockpiling and pugmill solutions. The company's very latest offering is its next-level tracked jaw, the XJ Dual-Power jaw crusher, which adds power, production capability and

crushing performance to the already impressive line-up.

“In line with our design philosophy, the dual-power XJ comes packed with a range of user-friendly features including remote control feeder and remote unblock facility as well as hydraulic fold-and-lock Hardox hopper sides. While all our models are available in dual-power format, our crushers (including the smaller XL model) come with this feature built-in offering several distinct advantages over traditional diesel/hydraulic crushers. Not least of which is a miserly fuel consumption in single digits for liters per hour. Environmentally, the XJ checks all the boxes including both the ‘Zero Emissions’ box with its plug-in ability and the ‘Low Noise’ box. We believe that the XJ raises the productivity bar substantially for mid-sized crushers.”

About the XJ Dual-Power

Technical Details

- 1,000mm x 650mm jaw with 90kW electric drive
- Hydraulic wedge adjustment (50mm-125mm)
- 220 kVA Deutz TCD7.8 GenSet Tier4 (Stage V) engine
- Hardox lined hopper with hydraulic fold and lock
- 900mm heavy discharge belt
- Optional mains plug-in
- Hydraulic raise/lower discharge belt (to ground)
- Radio control feeder stop/start
- Jaw level sensor
- Dust suppression system
- Stepped grizzly with bypass chute
- 29,500kg (65,000lbs) operating weight

The new Screencore XJ is a diesel-electric 1,000mm x 650mm (40" x 27") jaw crusher designed for the processing of minerals and recycling construction materials in a compact and easily transportable form. This powerful machine is

based on the same principles of ease of operation and quick set-up time as other members of the growing Screencore range. The 29,500kg (65,000lbs) XJ's innovative features include a jaw level sensor, electric plug in, push-button hydraulic CSS wedge adjustment and a bolted mainframe jaw construction. In addition, for inner city material recycling operations, the crusher is equipped with a dust suppression system, overband magnet and an optional deflector plate.

"The XJ represents the culmination of several years of customer feedback and extensive research to incorporate the best features demanded by customers from a mid-sized tracked jaw crusher. We have taken the feedback on board to deliver what we believe is a game changer as it combines productivity with environmental performance. With its low transport height of just over 3m, length of 13.6m, and rapid set-up time, the XJ may be easily moved between sites for maximised operational flexibility, making it ideal for rental companies and businesses with a number of production sites," concludes Ciarán Ryan.