



VALVED BAGS

Areas of Use

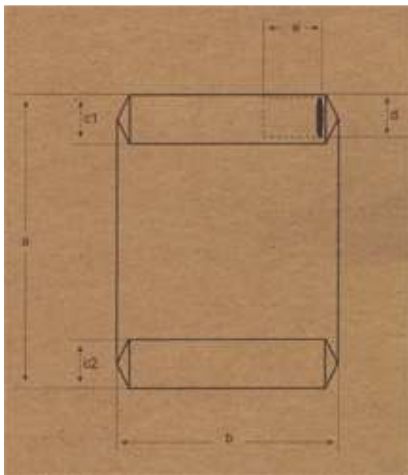
In this type of bag both bottom ends have hexagonal finishes. Its strength and impermeability have been enhanced with a reinforcement tape. It is suitable for the packaging of cement, calcite, lime, construction chemicals, plaster, barite, bentonite, silica, sand, other chemical materials and also for the food industry.

Advantages and Technical Specifications

Depending on the specifications of the type of valve used, this type of bag responds well to customer demands such as the ease of filling, the primacy of automation in packaging, and a solid impermeability.

In order to produce the solutions expected from us, we produce valves suitable for Basic Normal, Normal, Basic pipes, Ledged pipes, Narrow ended pipes, Lay-by, differential Pe and Pe pipes.

This type of bag can be manufactured within a range of 2 through 6 layers, with clupack or kraft paper, with a PE option and with or without a print on. Laminated kraft is equally an option if the customer prefers it.



(cm)	min	max
a) Sack Length	45	100
b) Sack Width	30	65
c) Sack Depth	9	22
d) Valve Width	-	-
e) Valve Length	-	-









OPEN MOUTH BAGS

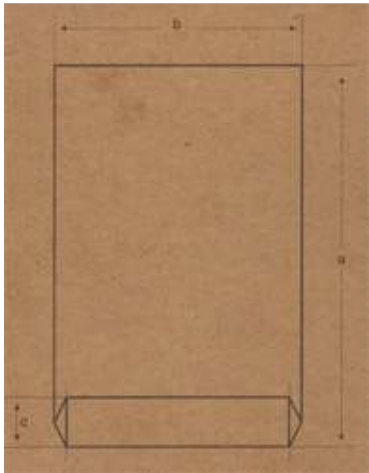
Areas of Use

This type of bags has a hexagonal bottom finish. Its strength and impermeability have been enhanced with a reinforcement tape. It is suitable for the packaging of food stuff and additives (flour, bread, cocoa, starch, sugar, milk powder, brine powder, oregano, mint, popcorn, hazelnut, coffee, animal derived nutrients, feed additives etc.) and chemical materials.

Advantages and Technical Specifications

Depending on the specificities of the packaged material, this type of bag can be filled in a very short time without the need for a valve and can be closed off with a sewing machine. The lack of a need for an automatic filling machine offers considerable cost reductions and makes this type of bag a favorite of small businesses.

This type of bag can be manufactured within a range of 2 through 6 layers, with clupack or kraft paper, with a PE option and with or without a print on. Laminated kraft is equally an option if the customer prefers it.



(cm)	min	max
a) Sack Length	45	100
b) Sack Width	30	65
c) Sack Depth	9	22



EKERLER KRAFT PAPER SACK INC.

WWW.EKERLER.COM

TEL: +90 332 239 19 08 (PBX)

FAX: +90 332 239 18 89

KONYA – TURKEY

